

# SIGNATURE SERIES MOTORIZATION APP AND GATEWAY QUICK START GUIDE

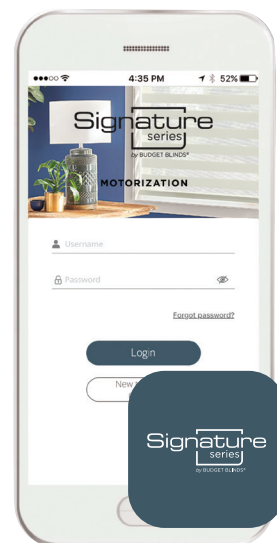
## EVERYTHING NEEDED TO GET STARTED USING YOUR GATEWAY:

Before you begin, confirm your operating system is:

- iOS version 11 or greater
- Android version 8 or greater
- A 2.4 GHz network is available

STEP BY STEP VIDEOS ARE AVAILABLE BY VISITING [MOTORIZATION.SUPPORT.SITE](https://motorization.support.site).

- 1 Install the Signature Series Motorization app** on your mobile device. Just look for it in the iOS App Store or on Google Play.
- 2 Open your Signature Series Motorization app** and select New to Signature Series?
- 3 Plug in your gateway.** Once it's been plugged in, the blue LED will flash once and then turn off.
- 4 The Signature Series Motorization app will prompt you to go to the Wi-Fi Settings menu on your mobile device to connect to your gateway.** You will be required to enable your location. Select the plughub\_#### temporary network. If the plughub temporary network is not visible, unplug then plug back in. If it is still not visible, tap Need Help in the app for troubleshooting tips.
- 5 Follow the prompts in your Signature Series Motorization app.** Once you have selected the gateway network, return to your Signature Series Motorization app, and follow the prompts to complete the setup process. While your gateway is connecting to your home Wi-Fi, it should blink once per second. When it's connected the gateway will stop blinking. Gateway must be within 5' of the router during set up.
- 6 Congratulations!** Your gateway is now connected.
- 7 Follow the step-by-step instructions in the app.** You will be required to validate your email to finalize setup. If you do not receive an email, please check your email filters. Once complete, your account will automatically be linked to the gateway. You will also be prompted to autodetect your location. Select 'Allow' and then 'Save'. Your account is now set up. Click 'Start' to enter the app and the click 'Connect' to select your gateway.
- 8 To add devices to your account,** launch the Device Wizard by clicking the plus icon '+' in the top right corner of the Shades tab. Select 'Signature Series Product' and choose the type of shade you would like to add. Follow the prompts to add your shades to your account. After your shades have been added, use the same Device Wizard to add your remotes to the gateway. You must add your shades to your account before adding your remotes. At the end of the Device Wizard for remotes, you will be prompted to pair (associate) your remote to the shade(s) you would like to control.
- 9 To connect with Alexa or Google Home after you have added all your shades and remotes,** launch the Device Wizard by clicking the "+" in the top right corner. Select "Voice Assistants" and choose which one you would like to connect to. Follow the prompts in the app and your voice assistant app to complete the process.



The gateway plugs into any outlet.



For full owner's manual, please scan this QR code.

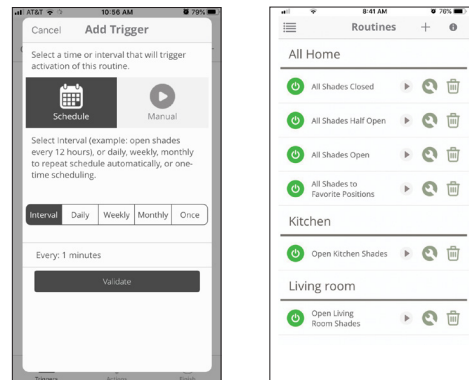
Signature  
series  
by BUDGET BLINDS®

# EASY, CONVENIENT CONTROL

The Signature Series Motorization app lets you control multiple shades from a single app. When you add your shades and routines, you'll be able to operate one or more shades at a time, set routines to operate them automatically at specific times of day, and more. You'll enjoy greater comfort and peace of mind every day.

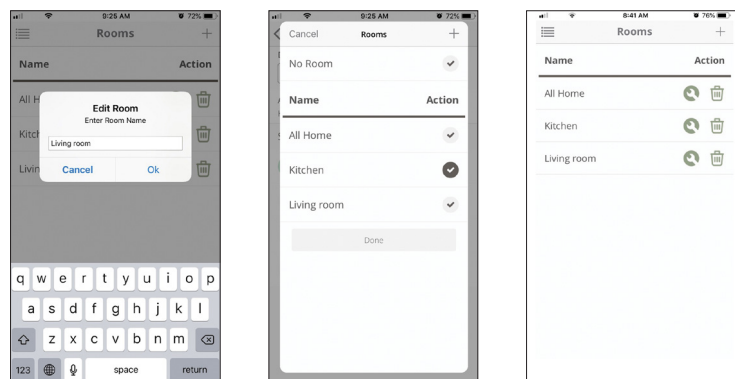
**Routines:** Set up routines to control multiple shades with the click of a button. Add timers to schedule and automate routines.

**Video available on**  
**motorization.support**



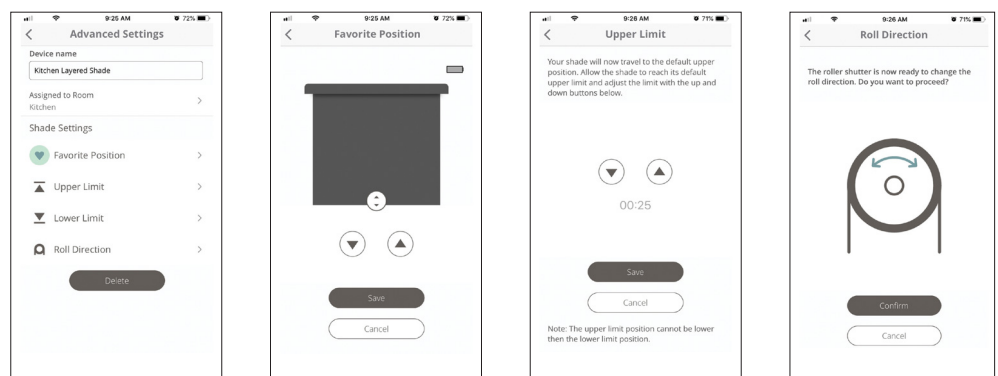
**Rooms:** Create and group individual shades into rooms for easy access and control.

**Video available on**  
**motorization.support**



**Advanced Settings:** Easily control advanced shade settings, including limits and favorite positions.

**Video available on**  
**motorization.support**



## Need Assistance?

Visit [motorization.support](http://motorization.support) or email us at [motorization.support@springswindowfashions.com](mailto:motorization.support@springswindowfashions.com).

Signature  
series  
by BUDGET BLINDS®