

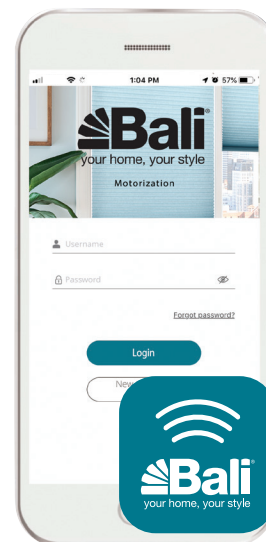
Bali Motorization App and Gateway Quick Start Guide

Everything needed to get started using your gateway:

Before you begin, confirm your phone's operating system is:

- iOS version 11 or greater
- Android version 8 or greater
- Confirm 2.4 GHz network is available
- Step by Step videos available by visiting motorization.support

- 1** Install the **Bali Motorization App** on your mobile device. Just look for it in the iOS App Store or on Google Play.
- 2** Open your **Bali Motorization App** and select 'New to Bali?'
- 3** Plug in your gateway. Once it's been plugged in, the blue LED will flash once and then turn off.
- 4** The app will prompt you to go to the **Wi-Fi Settings menu on your mobile device to connect to your gateway**. You will be required to enable your location. Select the Plughub_#### temporary network. If the Plughub temporary network is not visible, unplug then plug back in. If it is still not visible, tap Need Help in the app for troubleshooting tips.
- 5** Follow the prompts in your **Bali Motorization App**. Once you have selected the gateway network, return to your app, and follow the prompts to complete the setup process. While your gateway is connecting to your home Wi-Fi, it should blink once per second. When it's connected the gateway will stop blinking. Gateway must be within 5 feet of router during account set-up.
- 6** **Congratulations!** Your gateway is now connected.
- 7** Follow the **step-by-step instructions in the app**. You will be required to validate your email to finalize setup. If you do not receive an email, please check your email filters. Once complete, your account will automatically be linked to the gateway. You will also be prompted to autodetect your location. Select 'Allow' and then 'Save'. Your account is now set up. Click 'Start' to enter the app and the click 'Connect' to select your gateway.
- 8** To add devices to your account, launch the Device Wizard by clicking the plus icon '+' in the top right corner of the Shades tab. Select 'Bali Product' and choose the type of shade you would like to add. Follow the prompts to add your shades to your account. If unsuccessful, move the gateway closer to the shades being added. After your shades have been added, use the same Device Wizard to add your remotes to the gateway. You must add your shades to your account before adding your remotes. At the end of the Device Wizard for remotes, you will be prompted to pair (associate) your remote to the shade(s) you would like to control.
- 9** To connect with Alexa or Google Home after you have added all your shades and remotes, launch the Device Wizard by clicking the plus icon '+' in the top right corner of the Shades tab. Select 'Voice Assistants' and choose the type you would like to connect to. Follow the prompts in the Bali Motorization App and your Digital Voice Assistant app to complete the process.



The gateway plugs into any outlet.



For full owner manual,
please scan this QR code



Easy, Convenient Control

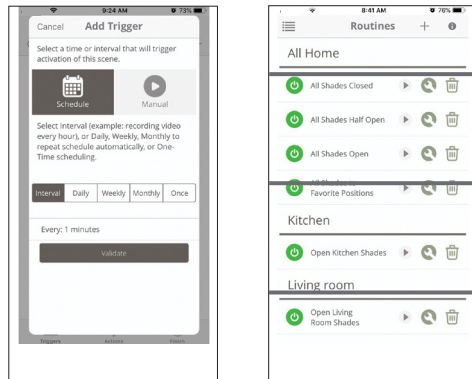
The Bali Motorization App lets you control multiple shades from a single app.

When you add your shades and create routines, you'll be able to operate one or more shades at a time, set routines to operate them automatically at specific times of day, and more. You'll enjoy greater comfort and peace of mind every day.

Routines:

Set up routines to control multiple shades with the click of a button. Add timers to schedule and automate routines.

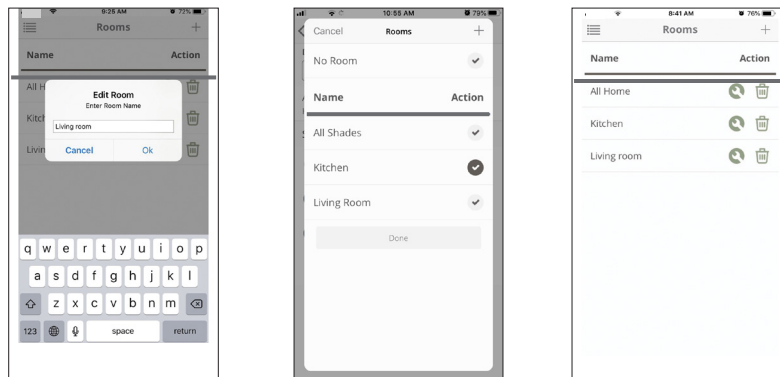
Video available on motorization.support



Rooms:

Create and group individual shades into rooms for easy access and control.

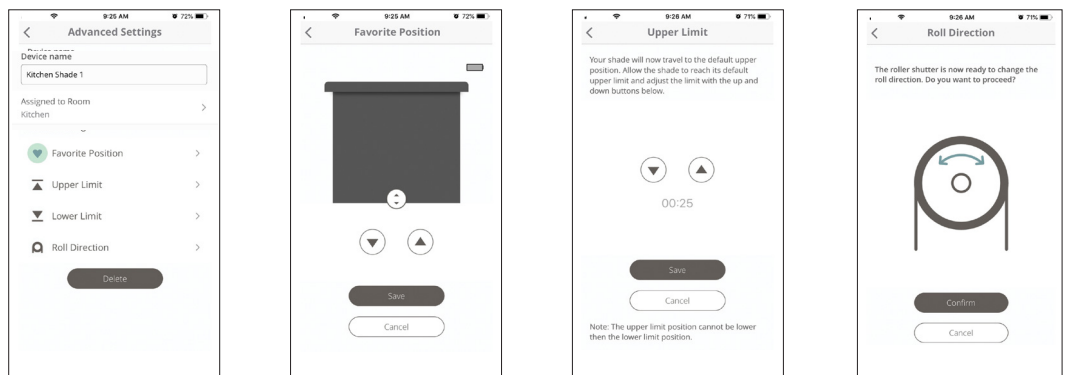
Video available on motorization.support



Advanced Settings:

Easily control advanced shade settings, including limits and favorite positions.

Video available on motorization.support



Need Assistance?

Visit motorization.support or email us at motorization.support@springswindowfashions.com.

