

## INTEGRATION GUIDE



CRESTRON **HOME**

# INTEGRATION for TAHOMA® ZIGBEE & RTS



**somfy**®

TABLE OF CONTENTS

I.

INTRODUCTION

-----

3

II.

OVERVIEW

-----

4

DESCRIPTION

RESOURCES & APPLICATIONS

SYSTEM REQUIREMENTS

III.

INSTALLATION

-----

5

CONNECTIONS & INDICATORS

IV.

SYSTEM PREPARATION

-----

6

SOMFY SYSTEM

CRESTRON HOME SYSTEM

V.

SET UP

-----

7

PAIR DEVICES

ADD TAHOMA INTERFACE DEVICE TO ROOM

ADD TAHOMA BLIND OR SMART PLUG TO ROOM

APPENDIX

-----

10

A.

ENABLE THIRD-PARTY INTEGRATION

B.

AVAILABLE COMMANDS & ACTIONS

# I. INTRODUCTION

---

The Somfy Organization's strength has been demonstrated with 50 years of experience in motorization. As leaders in the shading industry with innovative and modern solutions for homes and commercial buildings, Somfy offers the widest range of strong, quiet motors and controls for all types of applications and technologies.

## **Who is this Guide for?**

This guide is aimed at providing support and guidance to Crestron® Integrators for achieving complete automation of Zigbee® and Radio Technology Somfy® (RTS) motors and the Somfy TaHoma® Smartphone and Tablet Interface.

## **What does this Guide contain?**

The sections of this guide contain walkthroughs and methods of controlling Zigbee and RTS motors using the TaHoma® Smartphone and Tablet Interface as the bridge between Crestron and Smart Shading by Somfy.

For questions or assistance please contact technical support:

(800) 22-SOMFY (76639)

[technicalsupport\\_us@somfy.com](mailto:technicalsupport_us@somfy.com)

## **How to use this Guide?**

This guide is designed as a reference manual.

## II. OVERVIEW

### DESCRIPTION

The Somfy TaHoma® Smartphone and Tablet Interface provides a single platform for Somfy Zigbee and RTS with a wide range of interior and exterior applications.

- The TaHoma system supports up to 50 Zigbee devices and 40 RTS channels
- Install up to 10 TaHoma Interfaces as zone controllers to increase the RTS range (RTS only)
  - The TaHoma system can support a maximum of 40 scenes with schedules per install

Each TaHoma Interface is connected to Wi-Fi or directly to the local area network by an optional Ethernet adaptor for IP Integration with third-party control systems. TaHoma is compatible with the Somfy Synergy™ API.

Details of this controller and commissioning instructions are available in the Somfy TaHoma Smartphone and Tablet Interface Programming Guide.

### RESOURCES & APPLICATIONS

Visit [www.somfypro.com](http://www.somfypro.com) for the following guides:

- [Somfy TaHoma Smartphone and Tablet Interface Programming Guide](#)
  - [Somfy RTS Pocket Programming Guide](#)

Subscribe to the Somfy YouTube Channel [www.youtube.com/somfysystems](http://www.youtube.com/somfysystems)

Visit Somfy U for all the training you need – your pace, your place [www.somfyu.com](http://www.somfyu.com)

Visit the Google Play or iOS App Store for the Somfy TaHoma North America App:



[Google Play Store](#)



[iOS App Store](#)

### SYSTEM REQUIREMENTS

PC running Windows 10 or higher  
Crestron Toolbox Software  
Crestron Home Setup Software  
Crestron Home App  
Somfy TaHoma Gateway Driver



**CRESTRON HOME**

### III. INSTALLATION

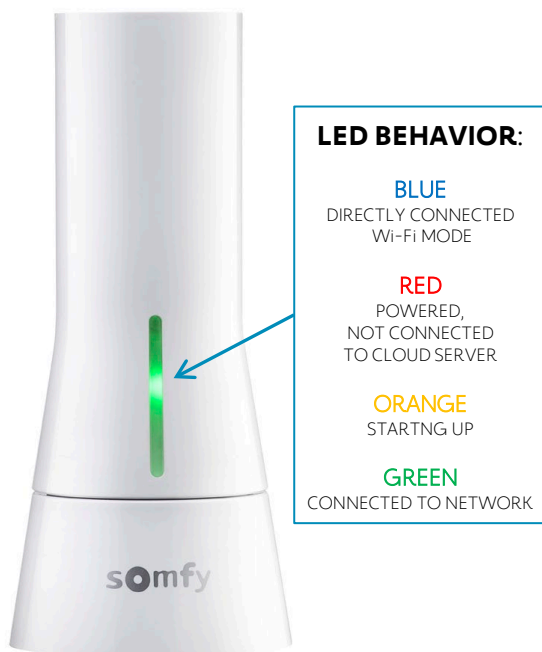
#### CONNECTIONS & INDICATORS

##### TaHoma® RTS/Zigbee Smartphone and Tablet Interface #1811731 (With base stand included with TaHoma Interface)

###### REAR

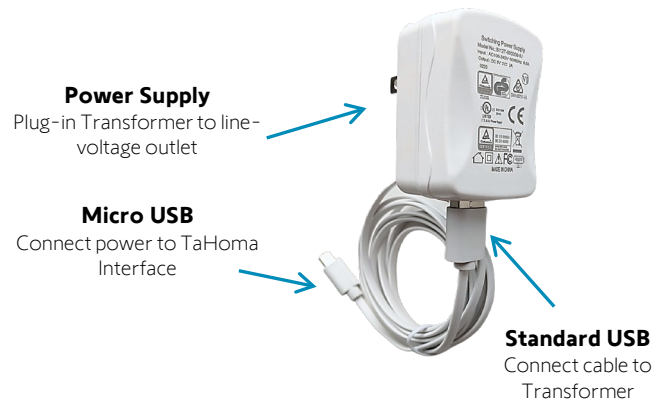


###### FRONT



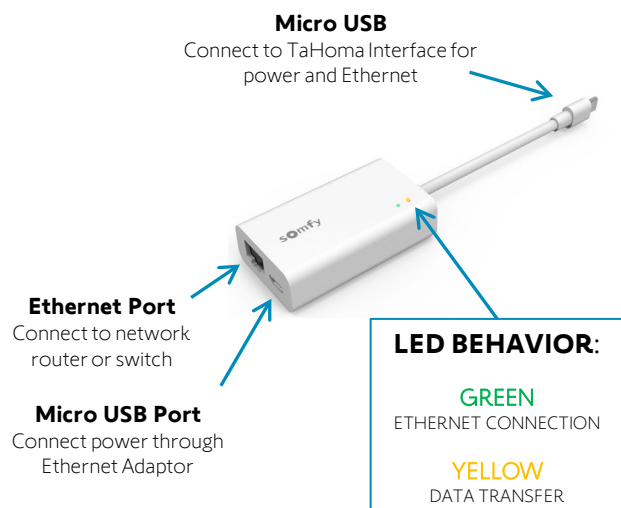
##### PLUG-IN POWER SUPPLY REQUIRED (Included with TaHoma Interface)

Connect to line-voltage to power TaHoma Interface



##### TaHoma® Ethernet Adaptor #1870470 (Sold Separately)

Connect for a wired local area network connection



## IV. SYSTEM PREPARATION

### SOMFY SYSTEM

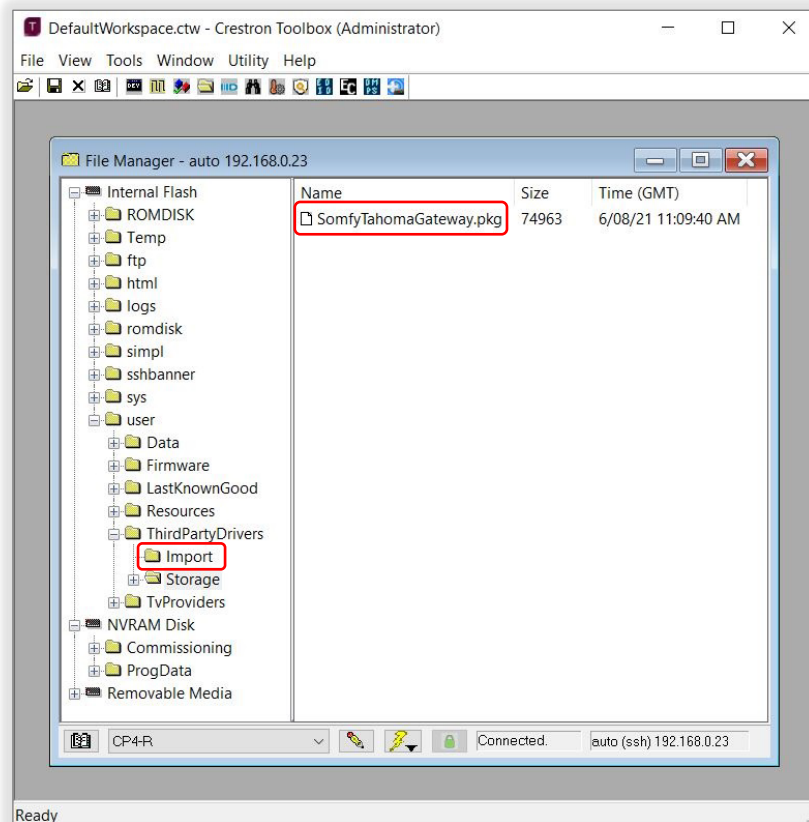
A fully operational TaHoma system is required prior to Crestron programming. The TaHoma system supports up to 50 Zigbee devices and 40 channels of RTS. RTS devices programmed to an RTS channel will only receive commands from the associated TaHoma Interface. Interfaces must be placed within 25-35' of the devices they control.

- Confirm with the Shade Commissioning Agent that the TaHoma Interface firmware is up to date
- An Integration Report is generated in the TaHoma App which will include the TaHoma Interface PIN and IP address
  - Ensure that a DHCP Reservation via MAC Address of the TaHoma Interface is being used
  - Third-Party Integration must first be enabled in the TaHoma App ([see Appendix A](#))

### CRESTRON HOME SYSTEM

A fully operational Crestron Home system is required prior to Crestron programming.

- 1) DOWNLOAD the Somfy TaHoma Gateway driver package from the Crestron Marketplace
- 2) In the Crestron Toolbox, OPEN File Manager and Workspace
- 3) Once connected to the Crestron Home control processor, PLACE the Somfy TaHoma driver into the Internal Flash > user > ThirdPartyDrivers > Import folder



- 4) RESTART the Crestron Home control processor

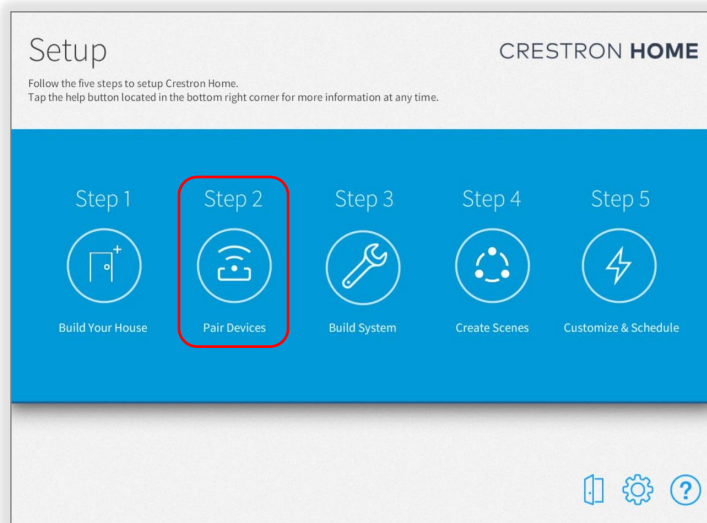
## V. SET UP

### PAIR DEVICES

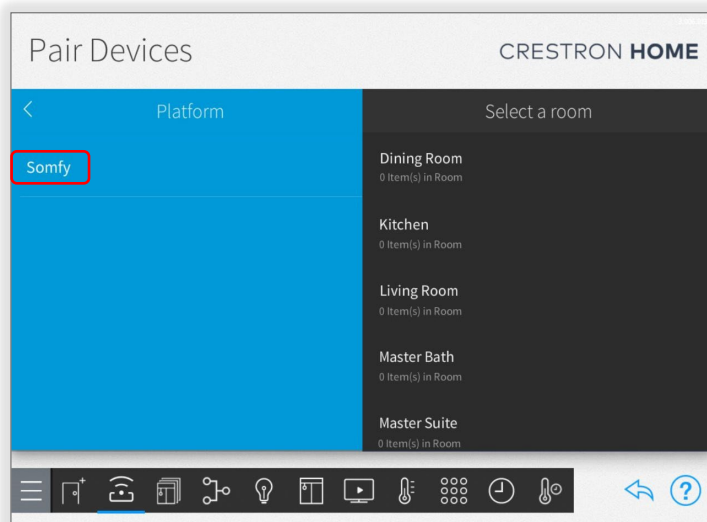
Reference the Integration Report for the TaHoma Interface IP address and associated devices.

#### ADD TAHOMA INTERFACE DEVICE TO ROOM

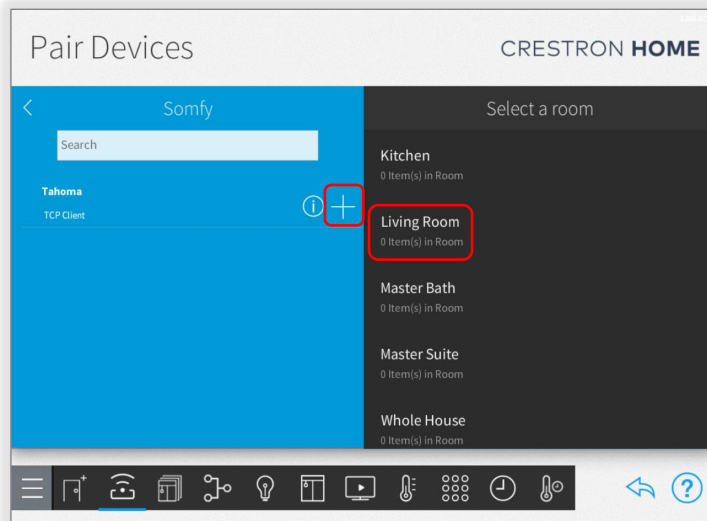
- 1) In the Crestron Home Setup software, first COMPLETE "Step 1" of adding rooms to Build Your House
- 2) SELECT "Step 2" to Pair Devices



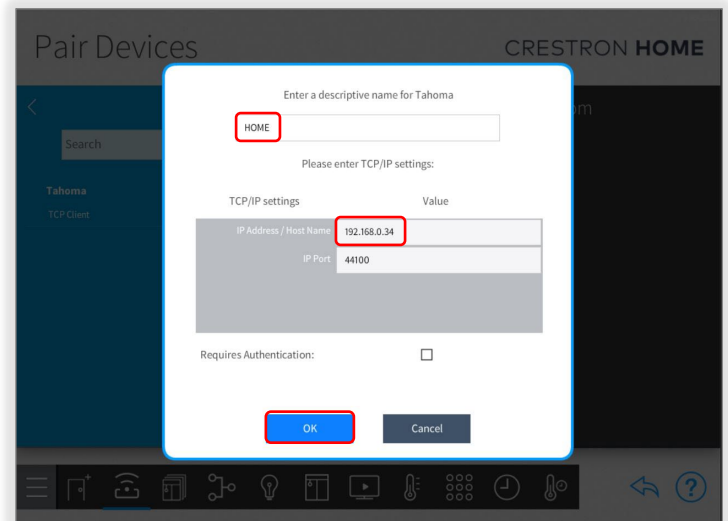
- 3) In Pair Devices:
  - SELECT "Drivers"
  - SELECT "Platform"
  - SELECT "Somfy"



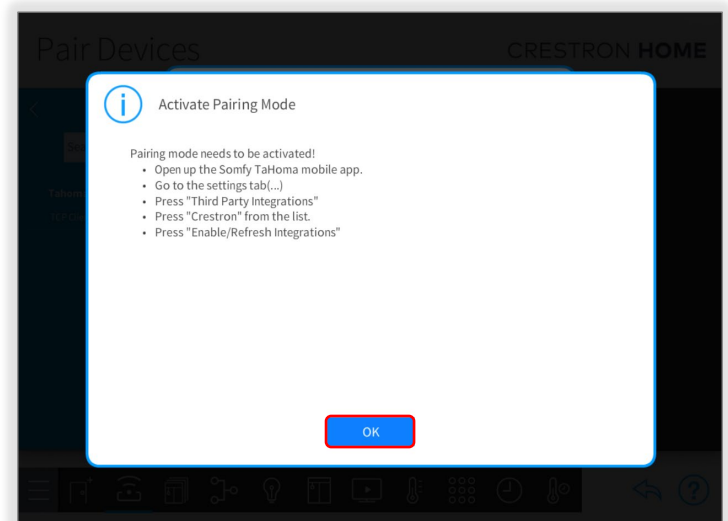
- 4) SELECT a room where the TaHoma Interface is located
- 5) SELECT the "+" icon to add the TaHoma to the selected room



- 6) ENTER a descriptive name for the TaHoma
- 7) ENTER the IP address of the TaHoma, SELECT "OK"

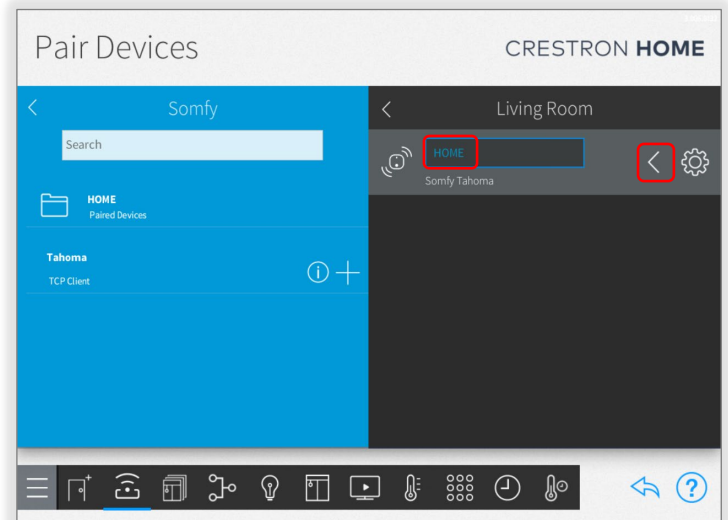


- 8) At the Activate Pairing Mode prompt, FOLLOW the steps to enable integration, SELECT "OK"



In a multiple TaHoma installation, REPEAT Step 4 for each additional TaHoma Interface

- To Rename a device, ENTER a name in the "Device Name" field
- To Remove a device, SELECT the "left" arrow

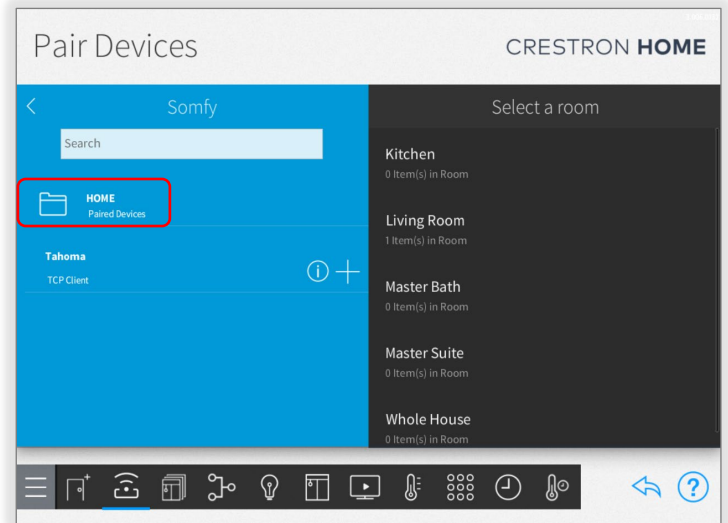




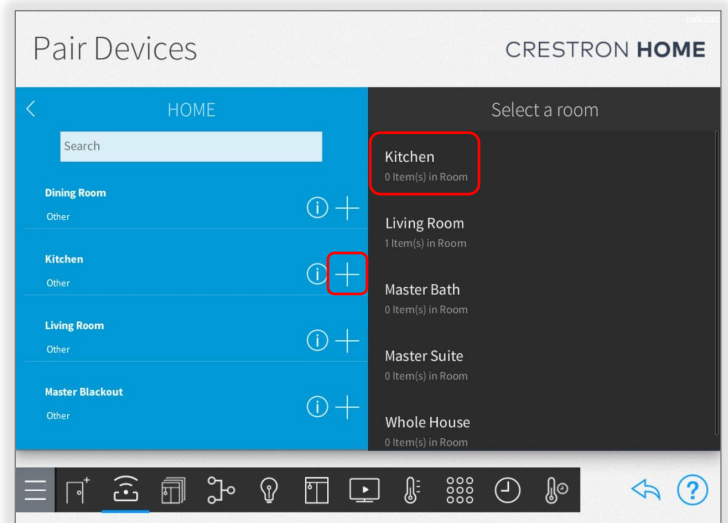
## ADD TAHOMA BLIND OR SMART PLUG TO ROOM

- 1) OPEN the TaHoma Paired Devices folder

*The Pair Devices folder contains all devices already created in the Somfy TaHoma App.*



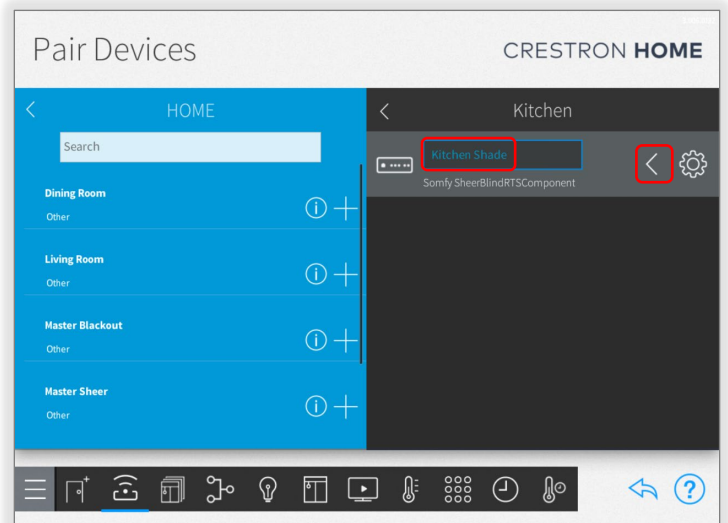
- 2) SELECT a room for where a Paired Device is located, SELECT the "+" icon to add the device to the appropriate room



- 3) Enter a descriptive name for the device, SELECT "OK"

- To Rename a device, ENTER a name in the "Device Name" field
- To Remove a device, SELECT the "left" arrow

- 4) Use the Crestron Home App to TEST device operation



See Appendix B of this guide for a list of Somfy TaHoma specific commands and actions. RTS motors do not report positional feedback.

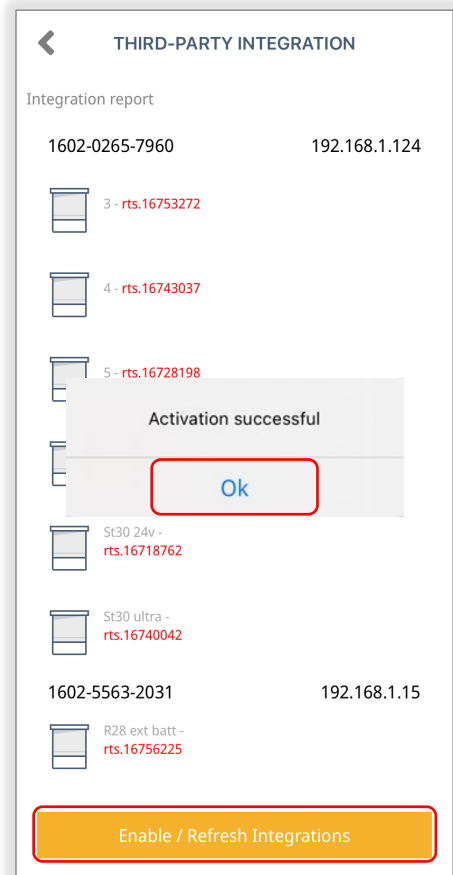
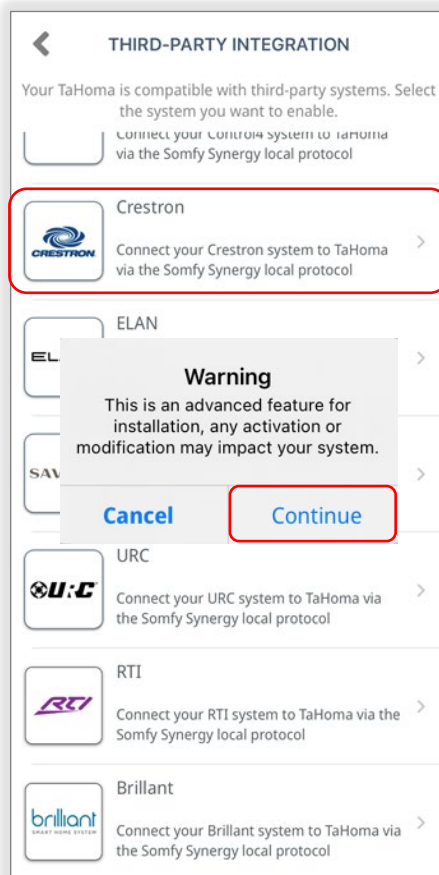
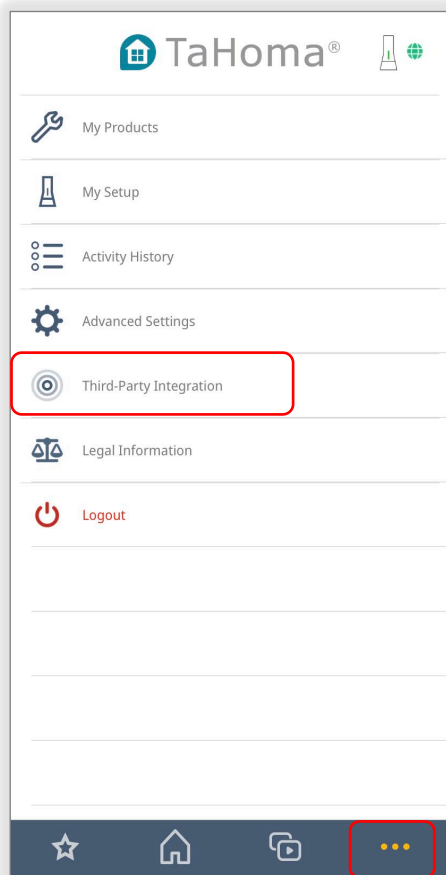
RTS motors are capable of one programmable "my" or favorite position that requires a Stop command when the motor is at rest.

Use the Crestron Home App Favorite button to achieve the "my" position command.

# APPENDIX

## [APPENDIX A] ENABLE THIRD-PARTY INTEGRATION

- 1) OPEN the TaHoma North America App
- 2) SELECT the "Menu" icon in the bottom bar
- 3) SELECT "Third-Party Integration"
- 4) SELECT "Crestron" to view the Integration Report
- 5) SELECT "Continue" at the Warning
- 6) SELECT "Enable/Refresh Integrations"
- 7) SELECT "Ok"





TAHOMA ZIGBEE COMMANDS	
Close	Moves blind to the fully closed position
Open	Moves blind to the fully open position
Stop	Stops blind when moving
My	Moves blind to the programmed “my” position if blind is at rest
Position	Moves blind to a percent position closed (0-100)



TAHOMA SMART PLUG COMMANDS	
On	Turns power on to lighting or small appliance
Off	Turns power off to lighting or small appliance



TAHOMA RTS COMMANDS	
Close	Moves blind to the fully closed position
Open	Moves blind to the fully open position
Stop	Stops blind when moving
My	Moves blind to the programmed “my” position if blind is at rest
Tilt Up	Tilts blind up (only available for tilt blinds)
Tilt Down	Tilts blind down (only available for tilt blinds)

## ABOUT SOMFY

SOMFY® has been improving everyday life for more than 270 million people by designing and manufacturing intelligent motorization solutions for interior window coverings and exterior solar protections. Somfy innovates to automate and connect shades, blinds, draperies, awnings, rolling shutters, exterior screens & pergolas for commercial and residential buildings in 58 countries across the globe. With 170+ million motors produced over the last half century, Somfy is committed to creating reliable and sustainable solutions that promote the best way of living and well-being for all.

## FOR QUESTIONS OR ASSISTANCE PLEASE CONTACT TECHNICAL SUPPORT:

(800) 22-SOMFY (76639)

technicalsupport\_us@somfy.com

### SOMFY SYSTEMS INC

#### SOMFY NORTH AMERICAN HEADQUARTERS

121 Herrod Blvd.

Dayton, NJ 08810

P: (609) 395-1300

F: (609) 395-1776

### FLORIDA

1200 SW 35th Ave.

Boynton Beach, FL 33426

F: (561) 995-7502

### CALIFORNIA

15301 Barranca Parkway

Irvine, CA 92618-2201

F: (949) 727-3775

### SOMFY ULC

#### SOMFY Canada Division

6411 Edwards Blvd

Mississauga, ON L5T 2P7

P: (905) 564-6446

F: (905) 238-1491

[www.somfypro.com](http://www.somfypro.com)

A BRAND OF **SOMFY** GROUP

