

PHILIPS

hue

# INTEGRATION for TAHOMA® ZIGBEE & RTS



## TABLE OF CONTENTS

I.	INTRODUCTION	3
II.	OVERVIEW	4
	DESCRIPTION	
	RESOURCES & APPLICATIONS	
	SYSTEM REQUIREMENTS	
III.	INSTALLATION	5
	CONNECTIONS & INDICATORS	
IV.	SYSTEM PREPARATION	6
	SOMFY SYSTEM	
	PHILIPS HUE SYSTEM	
V.	SET UP	7
	CONNECT PHILIPS HUE TO TAHOMA	
	DISCOVER DEVICES IN TAHOMA	
	CREATE A SCENE IN TAHOMA	
	CREATE A SCHEDULE IN TAHOMA	
	DELETE A SCENE IN TAHOMA	
	REMOVE PHILIPS HUE DEVICE OR BRIDGE FROM TAHOMA	
	APPENDIX	13
	A. AVAILABLE COMMANDS & ACTIONS	
	B. CONTROL PHILIPS HUE DEVICES IN TAHOMA	

# I. INTRODUCTION

---

The Somfy Organization's strength has been demonstrated with 50 years of experience in motorization. As leaders in the shading industry with innovative and modern solutions for homes and commercial buildings, Somfy offers the widest range of strong, quiet motors and controls for all types of applications and technologies.

## **Who is this Guide for?**

This guide is aimed at providing support and guidance to homeowners, installers, and dealers for achieving complete automation of Zigbee® and Radio Technology Somfy® (RTS) motors with the TaHoma® Smartphone and Tablet Interface.

## **What does this Guide contain?**

The sections of this guide contain walkthroughs and methods of controlling Zigbee and RTS devices using the TaHoma® Smartphone and Tablet Interface as the bridge between Philips Hue and Smart Shading by Somfy.

For questions or assistance please contact technical support:

(800) 22-SOMFY (76639)

[technicalsupport\\_us@somfy.com](mailto:technicalsupport_us@somfy.com)

## **How should this Guide be used?**

This guide is intended to be used as a reference manual.

## II. OVERVIEW

### DESCRIPTION

The Somfy TaHoma® Smartphone and Tablet Interface provides a single platform for Somfy Zigbee and RTS with a wide range of interior and exterior applications.

- The TaHoma system supports up to 50 Zigbee devices and 40 RTS channels
- Install up to 10 TaHoma Interfaces as zone controllers to increase the RTS range (RTS only)
  - The TaHoma system can support a maximum of 40 scenes with schedules per install

Each TaHoma Interface is connected to Wi-Fi or directly to the local area network by an optional Ethernet adaptor for IP Integration with third-party control systems. TaHoma is compatible with the Somfy Synergy™ API.

Details of this controller and commissioning instructions are available in the Somfy TaHoma Smartphone and Tablet Interface Programming Guide.

### RESOURCES & APPLICATIONS

Visit [www.somfypro.com](http://www.somfypro.com) for the following guides:

- [Somfy TaHoma Smartphone and Tablet Interface Programming Guide](#)
  - [Somfy RTS Pocket Programming Guide](#)

Subscribe to the Somfy YouTube Channel [www.youtube.com/somfysystems](http://www.youtube.com/somfysystems)

Visit Somfy U for all the training you need – your pace, your place [www.somfyu.com](http://www.somfyu.com)

Visit the Google Play or iOS App Store for the Somfy TaHoma North America App:



[Google Play Store](#)



[iOS App Store](#)

Visit the Google Play or iOS App Store for the Philips Hue App:



[Google Play Store](#)



[iOS App Store](#)

### SYSTEM REQUIREMENTS

The TaHoma app is compatible with the following operating systems and software versions:

iOS 11.0+

Android 7.0+



### III. INSTALLATION

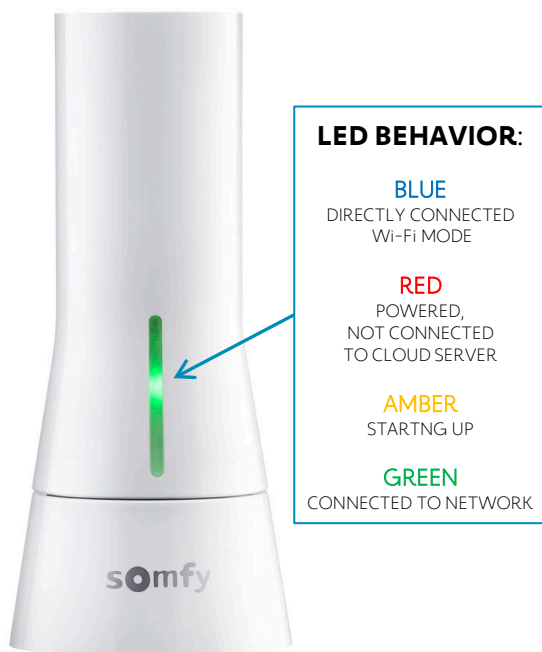
#### CONNECTIONS & INDICATORS

##### TaHoma® RTS/Zigbee Smartphone and Tablet Interface #1811731 (With base stand included with TaHoma Interface)

###### REAR

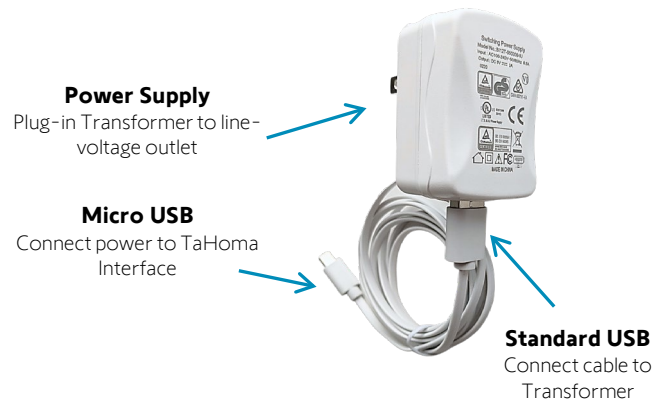


###### FRONT



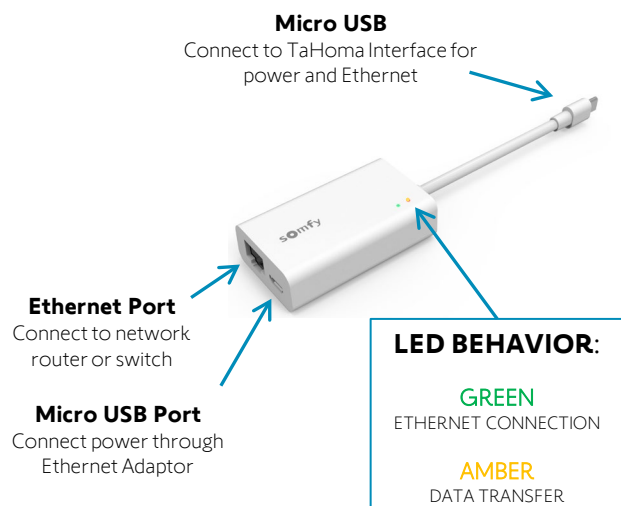
##### PLUG-IN POWER SUPPLY REQUIRED (Included with TaHoma Interface)

Connect to line-voltage to power TaHoma Interface



##### TaHoma® Ethernet Adaptor #1870470 (Sold Separately)

Connect for a wired local area network connection



## IV. SYSTEM PREPARATION

---

### SOMFY SYSTEM

*A fully operational TaHoma system is required prior to Philips Hue programming. The TaHoma system supports up to 50 Zigbee devices and 40 channels of RTS. RTS devices programmed to an RTS channel will only receive commands from the associated TaHoma Interface. Interfaces must be placed within 23-35 feet of the devices they control.*

- Confirm with Shade Commissioning Agent that the TaHoma Interface firmware is up to date
  - Must have one Philips Hue account per TaHoma system or project

*NOTE: Integration allows for Philips devices to be controlled from the TaHoma App*

### PHILIPS HUE SYSTEM

*A fully operational Philips Hue system is required prior to TaHoma integration.*

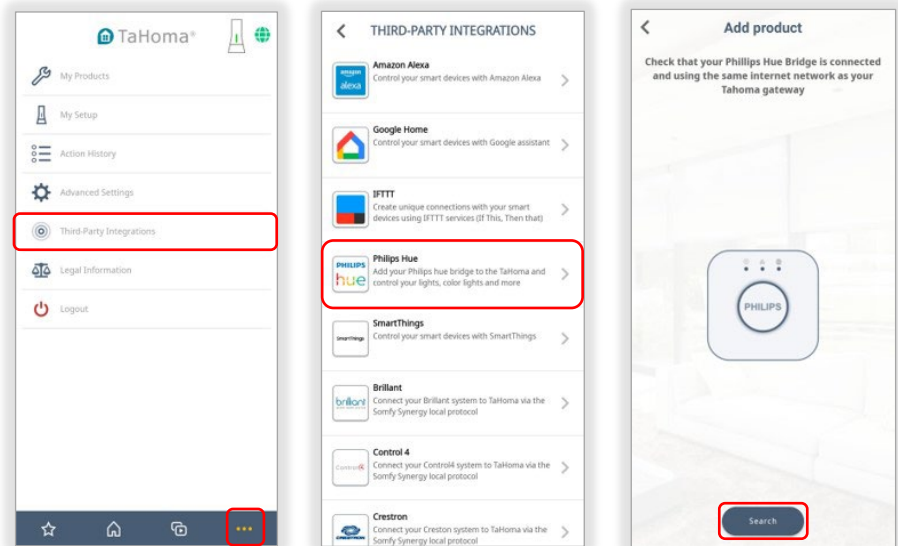
- Confirm that Philips Hue Hub is powered on and connected to a network with internet
  - Confirm the Philips Hue IOS/Android application is up to date

## V. SET UP

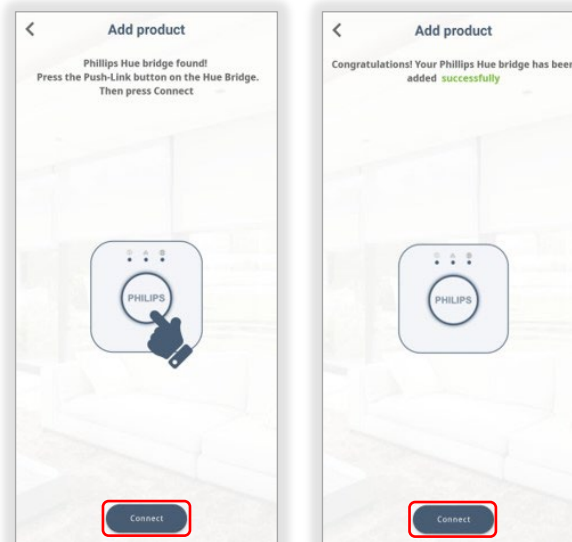
### CONNECT PHILIPS HUE TO TAHOMA

To enable Philips Hue control using the TaHoma North America app, follow the steps below.

- 1) From the TaHoma North America App, SELECT the Menu icon in the bottom right corner
- 2) SELECT "Third-Party Integrations"
- 3) SELECT "Philips Hue"
- 4) SELECT "Search"



- 5) After the "Philips Hue bridge found!" message appears, SELECT the push-link button on the Hue Bridge, SELECT "Connect"
- 6) After the "Congratulations!" message appears, SELECT "Connect"



**The Philips Hue & TaHoma accounts are now connected.**

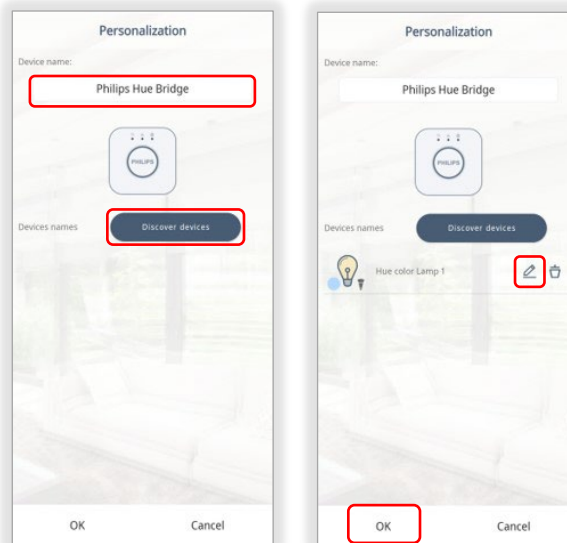
## DISCOVER PHILIPS HUE DEVICES IN TAHOMA

To discover Philips Hue Devices that have been added to the Philips Hue App, follow the steps below.

Be sure to have at least one device paired before proceeding.

From the Philips Hue App, ensure the light devices are connected and using the same internet network as the TaHoma Interface.

- 1) From the Personalization page, ENTER a name for the Philips Hue Bridge in the Name field  
*Example: Guest Room*
- 2) SELECT "Discover devices"
- 3) Once the devices have been discovered, the following can be done:
  - Add the Hue bulb as a favorite (Star icon)
  - Edit (Pencil icon) – Rename the Philips Device or Test the discovered device
  - Delete (Trash bin icon) – Delete a Philips Device that does not need to be part of TaHoma Integration
- 4) SELECT "OK" to complete the discover process

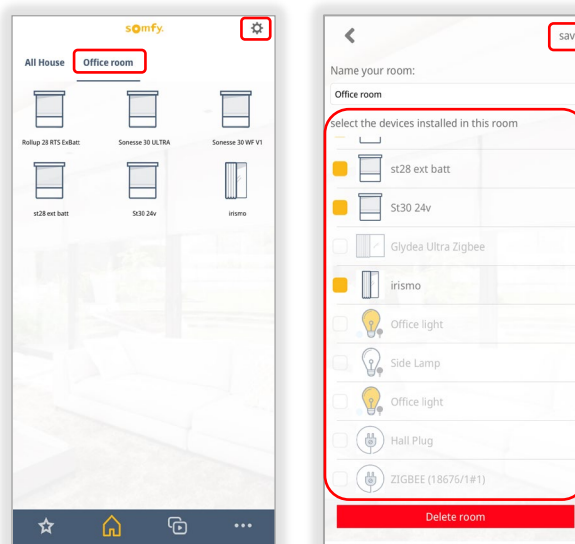


**Philips Hue devices have been discovered.  
These devices will appear on the TaHoma app Home screen  
and can be included in TaHoma Scenes and Schedules.**

To remove Philips Hue Devices, [refer to the Remove Philips Hue Device Or Bridge From TaHoma section](#) of this Guide.

### ADD DEVICES TO A ROOM

- 1) SELECT the Room from the top
- 2) SELECT the Gear icon
- 3) SELECT "Edit Room"
- 4) SELECT the devices to be included in the room
- 5) SELECT "save"





## CREATE A SCENE IN TAHOMA

Scenes allow multiple devices to be controlled at once.  
Example: Philips Hue Light Bulbs turn ON and RTS or Zigbee Motors go DOWN

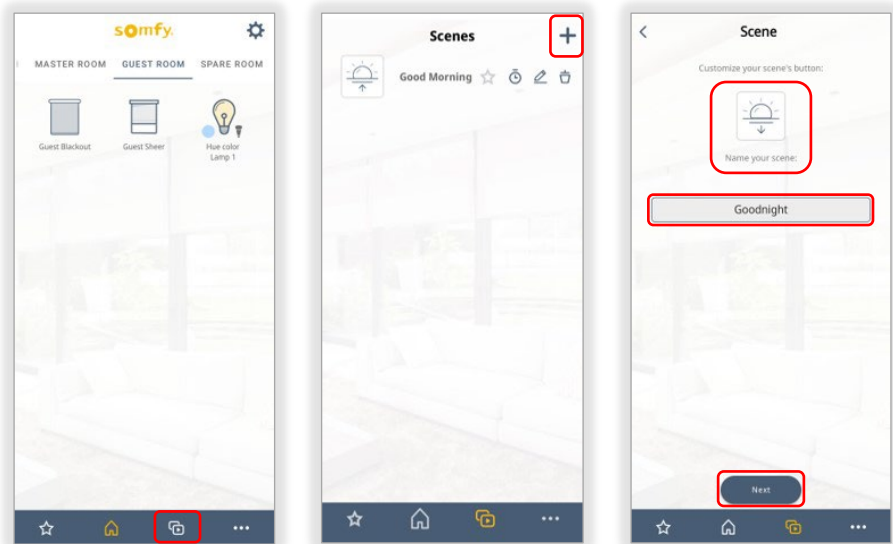
To create a scene, follow the steps below.

TaHoma supports 40 scenes with schedules.

- 1) SELECT the Scene & Schedule icon
- 2) SELECT + icon
- 3) SELECT an icon for the scene and ENTER a name for the scene in the text field

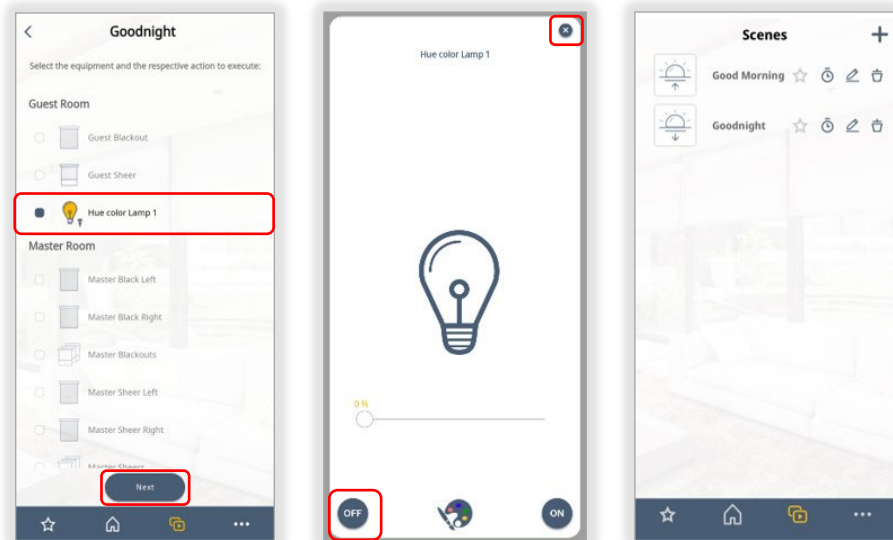
Example: Goodnight

- 4) SELECT "Next"



- 5) SELECT a Philips Hue Device  
Example: Hue color Lamp 1
- 6) SELECT "OFF" or "ON" and customize the Philips Hue Device by selecting a color and brightness
- 7) SELECT the X icon
- 8) SELECT "Next" when complete
- 9) TEST the Scene by selecting the "Goodnight" icon.

NOTE: To edit Scenes, SELECT the Pencil icon and begin from step 3.



**The first Scene is now created for Philips Hue.**

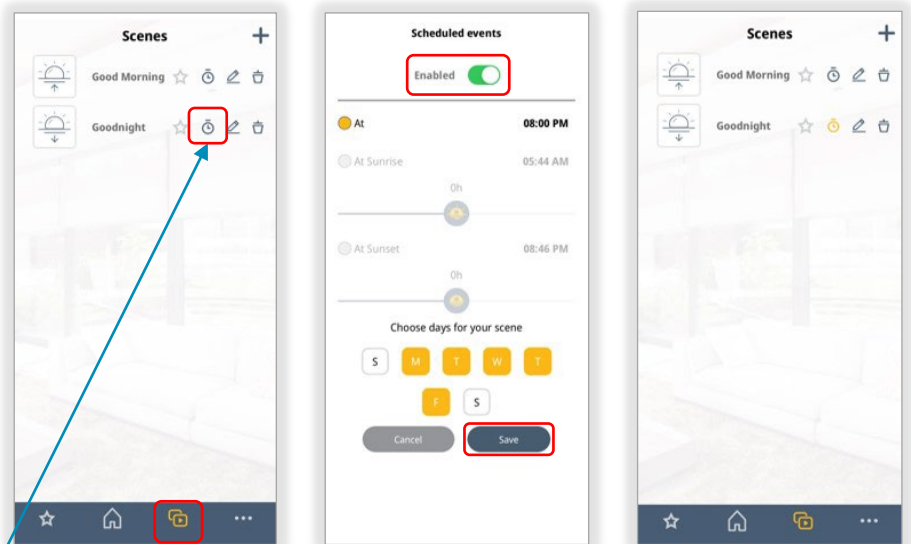
To create a schedule for the scene, [refer to the Create A Schedule In TaHoma section](#) of this Guide.

## CREATE A SCHEDULE IN TAHOMA

To create a schedule to turn Scenes on or off at specific times, follow the steps below.

### ENABLE A SCHEDULE

- 1) SELECT the Scene & Schedule icon
- 2) SELECT the Clock icon
- 3) TOGGLE "Enabled" to the ON position
- 4) SELECT a time for "At" and choose the days for the scene  
*Schedules can be set for Sunrise and Sunset if required*
- 5) SELECT "Save"

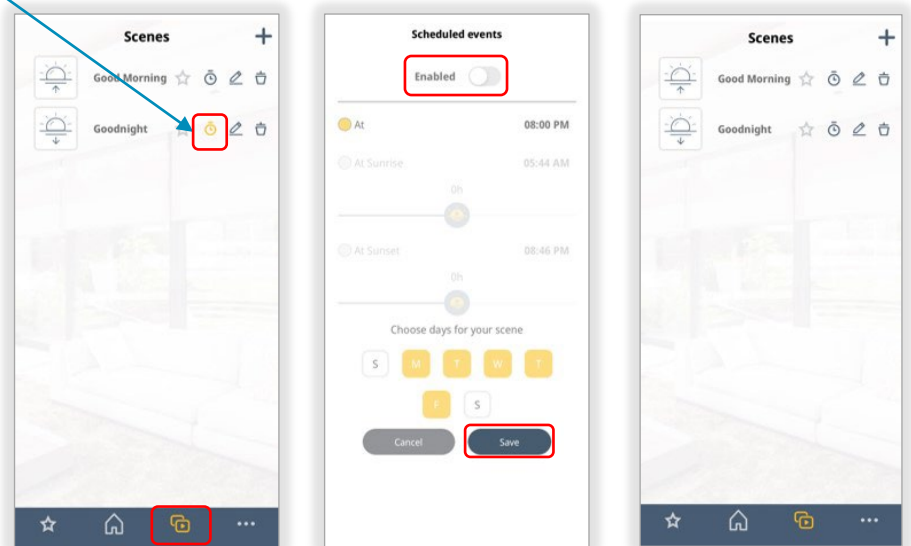


The Clock icon color indicates schedules are enabled when *yellow* and disabled when *gray*

**The Schedule is now enabled.**

### DISABLE A SCHEDULE

- 1) SELECT the Scene & Schedule icon
- 2) SELECT the Clock icon
- 3) TOGGLE "Enabled" to the OFF position
- 4) SELECT "Save"

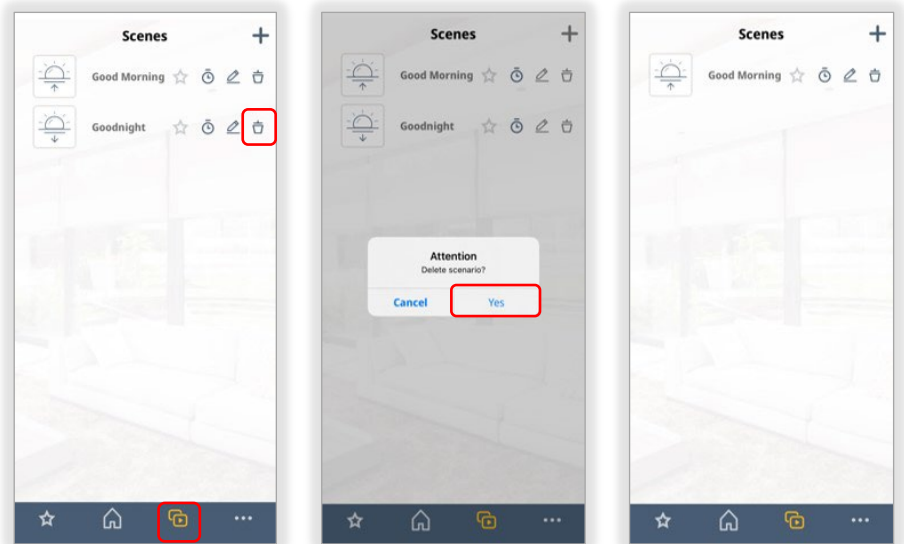


**The Schedule is now disabled.**

## DELETE A SCENE IN TAHOMA

*If a Scene is no longer required, follow the steps below.*

- 1) SELECT the Scene & Schedule icon
- 2) SELECT the Trash bin icon next to the scene to be deleted
- 3) SELECT "Yes"



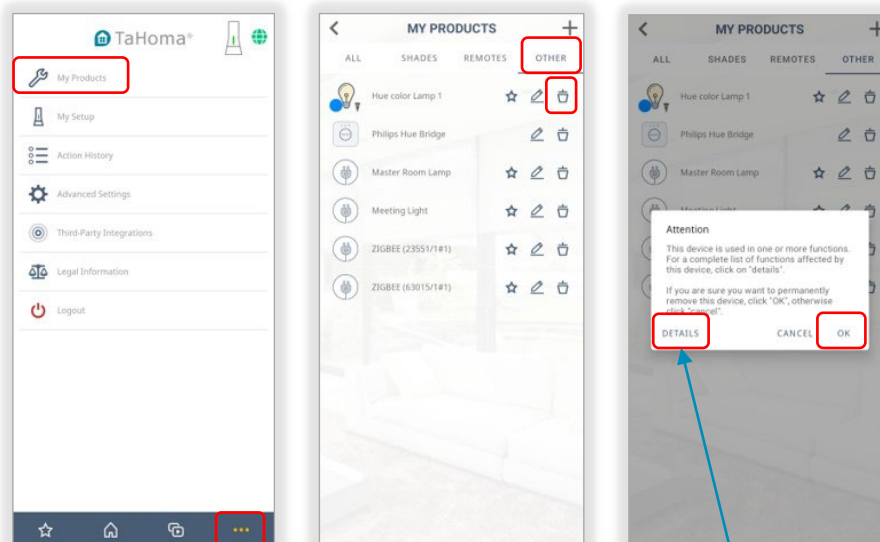
**The Scene is now deleted.**

## REMOVE PHILIPS HUE DEVICE OR BRIDGE FROM TAHOMA

If a Philips Hue Device or Bridge is no longer required for Integration, follow the steps below.

### REMOVE DEVICE

- 1) In the TaHoma North America App, SELECT the Menu icon in the bottom right corner
- 2) SELECT "My Products"
- 3) SELECT "OTHER"
- 4) SELECT the Trash bin icon next to the Philips device to be removed
- 5) SELECT "OK"

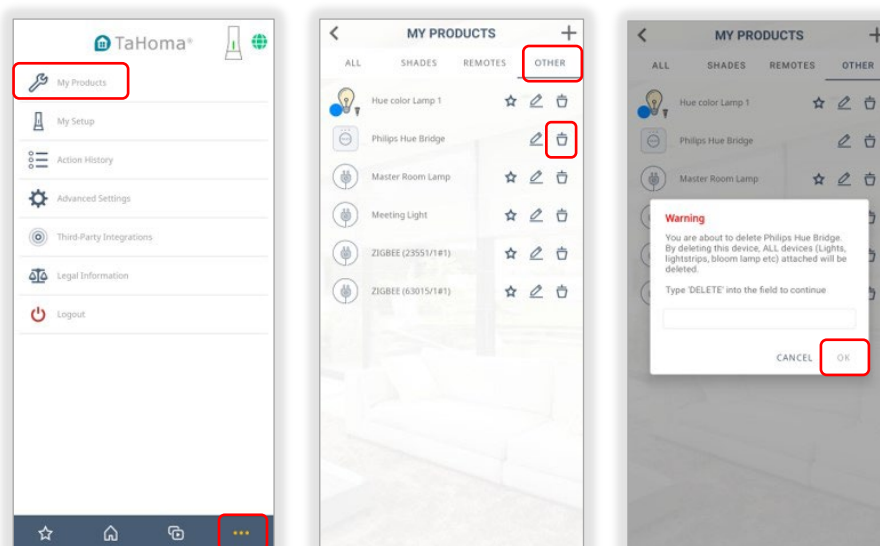


For a complete list of functions affected by this device, SELECT "DETAILS"

**The Philips Hue Device is now removed.**

### REMOVE BRIDGE

- 1) In the TaHoma North America App, SELECT the Menu icon
- 2) SELECT "My Products"
- 3) SELECT "Other"
- 4) SELECT the Trash Bin icon next to the Philips Hue Bridge
- 5) ENTER DELETE in all caps, SELECT "OK"



**The Philips Hue Bridge is now removed.**

# APPENDIX

## [APPENDIX A] AVAILABLE COMMANDS & ACTIONS

PHILIPS HUE DEVICE	
ON	Turn on a Philips Hue Device
OFF	Turn off a Philips Hue Device
Set Color	Change color of the Philips Hue Device
Increase/Decrease Brightness	Use the slider to increase and decrease the brightness of a paired Philips Hue Device

## [APPENDIX B] CONTROL PHILIPS HUE DEVICES IN TAHOMA

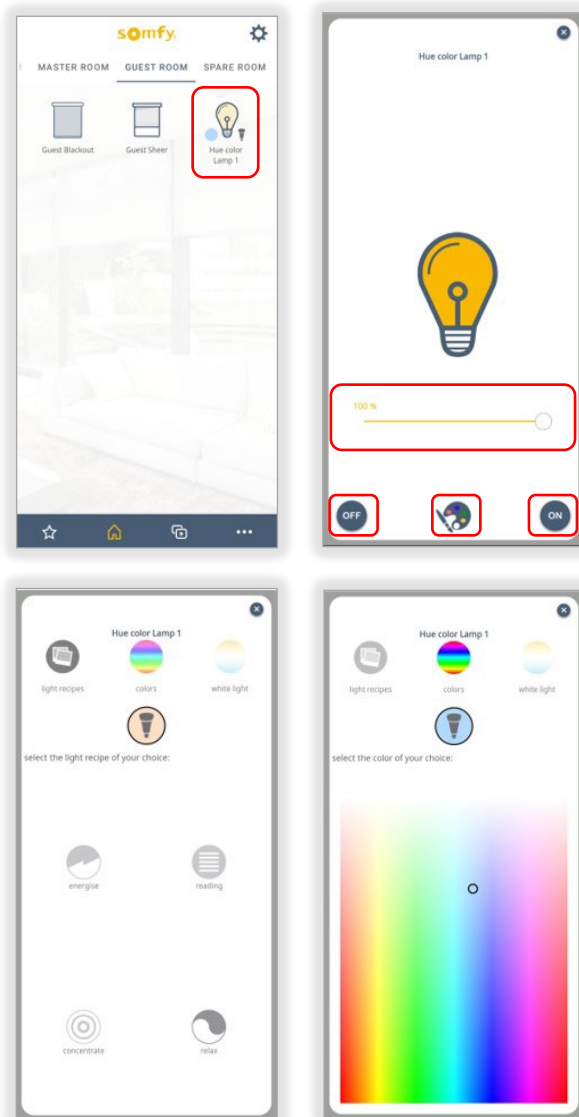
- 1) SELECT a Philips Hue Device to control  
*Example: "Hue color lamp 1"*
- 2) SELECT "OFF" to turn the device off  
SELECT "ON" to turn the device on
- 3) USE the Slider to adjust the brightness of the Philips Hue Device
- 4) SELECT the Color Palette icon to adjust the color of the Philips Hue Device

### Available Options:

Light Recipes – Choose a lighting intensity

Colors – Choose from a variety of colors

White Light – Choose from warm to daylight colors



## ABOUT SOMFY

SOMFY® has been improving everyday life for more than 270 million people by designing and manufacturing intelligent motorization solutions for interior window coverings and exterior solar protections. Somfy innovates to automate and connect shades, blinds, draperies, awnings, rolling shutters, exterior screens & pergolas for commercial and residential buildings in 58 countries across the globe. With 170+ million motors produced over the last half century, Somfy is committed to creating reliable and sustainable solutions that promote the best way of living and well-being for all.

## FOR QUESTIONS OR ASSISTANCE PLEASE CONTACT TECHNICAL SUPPORT:

(800) 22-SOMFY (76639)

technicalsupport\_us@somfy.com

### SOMFY SYSTEMS INC

#### SOMFY NORTH AMERICAN HEADQUARTERS

121 Herrod Blvd.

Dayton, NJ 08810

P: (609) 395-1300

F: (609) 395-1776

### FLORIDA

1200 SW 35th Ave.

Boynton Beach, FL 33426

F: (561) 995-7502

### CALIFORNIA

15301 Barranca Parkway

Irvine, CA 92618-2201

F: (949) 727-3775

### SOMFY ULC

#### SOMFY Canada Division

6411 Edwards Blvd

Mississauga, ON L5T 2P7

P: (905) 564-6446

F: (905) 238-1491

[www.somfypro.com](http://www.somfypro.com)

A BRAND OF **SOMFY** GROUP

