



INTEGRATION for TAHOMA® ZIGBEE & RTS



TABLE OF CONTENTS

I.	INTRODUCTION	3
II.	OVERVIEW	4
	DESCRIPTION	
	RESOURCES & APPLICATIONS	
	SYSTEM REQUIREMENTS	
III.	INSTALLATION	5
	CONNECTIONS & INDICATORS	
IV.	SYSTEM PREPARATION	6
	SOMFY SYSTEM	
	RTI SYSTEM	
V.	SET UP	7
	OPEN DEMO FILE	
	DRIVER CONFIGURATION	
	SEND TO DEVICE	
	RUN VIRTUAL PANEL	
	APPENDIX	12
	A. ENABLE THIRD-PARTY INTEGRATION	
	B. GENERATE NETWORK & SYSTEM KEYS	
	C. AVAILABLE COMMANDS & ACTIONS	

I. INTRODUCTION

The Somfy Organization's strength has been demonstrated with 50 years of experience in motorization. As leaders in the shading industry with innovative and modern solutions for homes and commercial buildings, Somfy offers the widest range of strong, quiet motors and controls for all types of applications and technologies.

Who is this Guide for?

This guide is aimed at providing support and guidance to RTI® Integrators for achieving complete automation of Zigbee® and Radio Technology Somfy® (RTS) motors and the Somfy TaHoma® Smartphone and Tablet Interface.

What does this Guide contain?

The sections of this guide contain walkthroughs and methods of controlling Zigbee and RTS motors using the TaHoma® Smartphone and Tablet Interface as the bridge between RTI and Smart Shading by Somfy.

For questions or assistance please contact technical support:

(800) 22-SOMFY (76639)

technicalsupport_us@somfy.com

How to use this Guide?

This guide is designed as a reference manual.

II. OVERVIEW

DESCRIPTION

The Somfy TaHoma® Smartphone and Tablet Interface provides a single platform for Somfy Zigbee and RTS with a wide range of interior and exterior applications.

- The TaHoma system supports up to 50 Zigbee devices and 40 RTS channels
- Install up to 10 TaHoma Interfaces as zone controllers to increase the RTS range (RTS only)
 - The TaHoma system can support a maximum of 40 scenes with schedules per install

Each TaHoma Interface is connected to Wi-Fi or directly to the local area network by an optional Ethernet adaptor for IP Integration with third-party control systems. TaHoma is compatible with the Somfy Synergy™ API.

Details of this controller and commissioning instructions are available in the Somfy TaHoma Smartphone and Tablet Interface Programming Guide.

RESOURCES & APPLICATIONS

Visit www.somfypro.com for the following guides:

- [Somfy TaHoma Smartphone and Tablet Interface Programming Guide](#)
 - [Somfy RTS Pocket Programming Guide](#)

Subscribe to the Somfy YouTube Channel www.youtube.com/somfysystems

Visit Somfy U for all the training you need – your pace, your place www.somfyu.com

Visit the Google Play or iOS App Store for the Somfy TaHoma North America App:



SYSTEM REQUIREMENTS

PC running Windows 10 or higher

RTI Integration Designer® APEX software 10.13.1 or higher

RTI Somfy TaHoma driver

RTI Somfy TaHoma Virtual Panel Demo



III. INSTALLATION

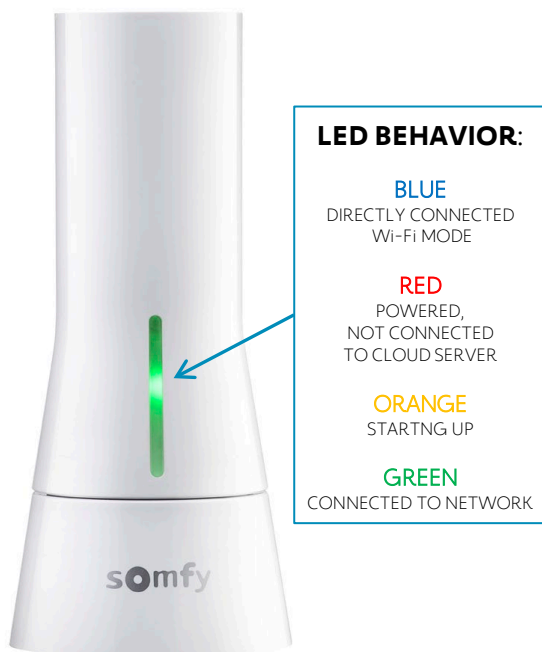
CONNECTIONS & INDICATORS

TaHoma® RTS/Zigbee Smartphone and Tablet Interface #1811731 (With base stand included with TaHoma Interface)

REAR

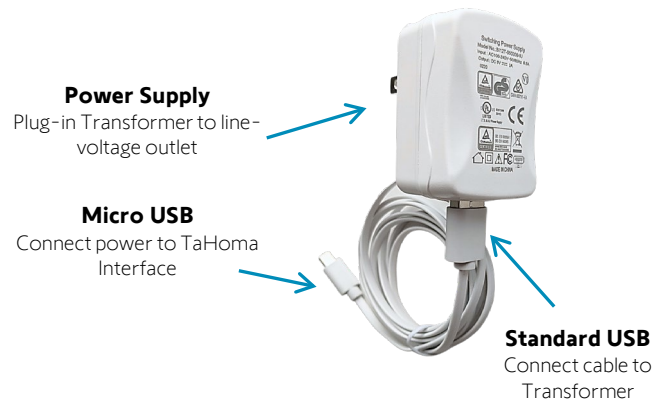


FRONT



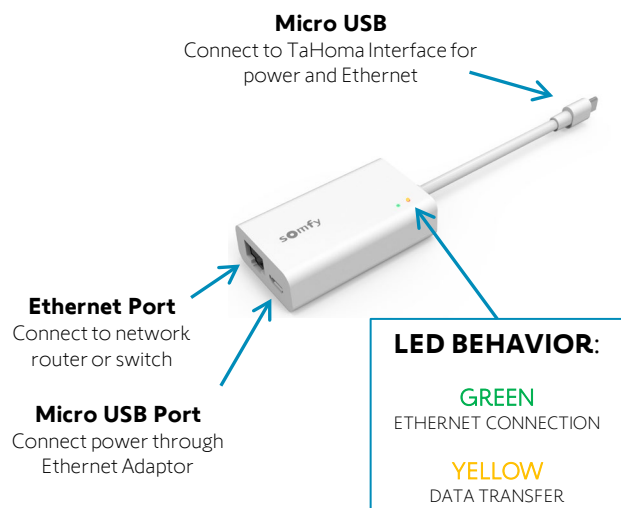
PLUG-IN POWER SUPPLY REQUIRED (Included with TaHoma Interface)

Connect to line-voltage to power TaHoma Interface



TaHoma® Ethernet Adaptor #1870470 (Sold Separately)

Connect for a wired local area network connection



IV. SYSTEM PREPARATION

SOMFY SYSTEM

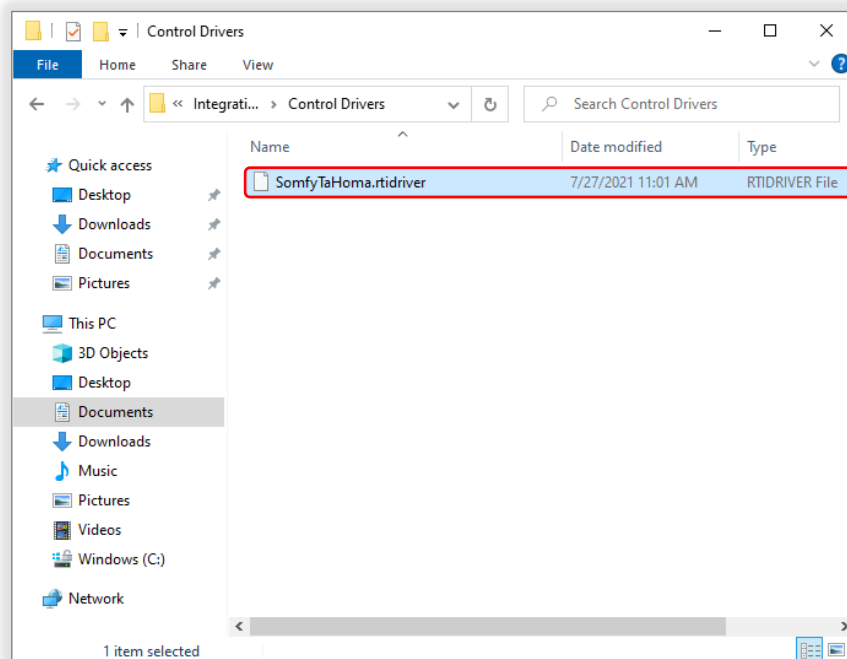
A fully operational TaHoma system is required prior to Control4 programming. The TaHoma system supports up to 50 Zigbee devices and 40 channels of RTS. RTS devices programmed to an RTS channel will only receive commands from the associated TaHoma Interface. Interfaces must be placed within 25-35' of the devices they control.

- Confirm with Shade Commissioning Agent that the TaHoma Interface firmware is up to date
- An Integration Report is generated in the TaHoma App which will include the TaHoma Interface PIN and IP address
 - Ensure that a DHCP Reservation via MAC Address of the TaHoma Interface is being used
 - Third-Party Integration must first be enabled in the TaHoma App ([see Appendix A](#))

RTI SYSTEM

*A fully operational RTI system is required prior to TaHoma integration.
Visit the RTI Dealer Portal for Integration Designer APEX documentation and additional programming instructions.*

- 1) DOWNLOAD and EXTRACT the Somfy TaHoma driver package from the RTI Dealer Portal
- 2) BROWSE to the Windows local user Documents > Integration Designer > Control Drivers folder
- 3) PLACE the file "SomfyTaHoma.rtidriver" in the folder

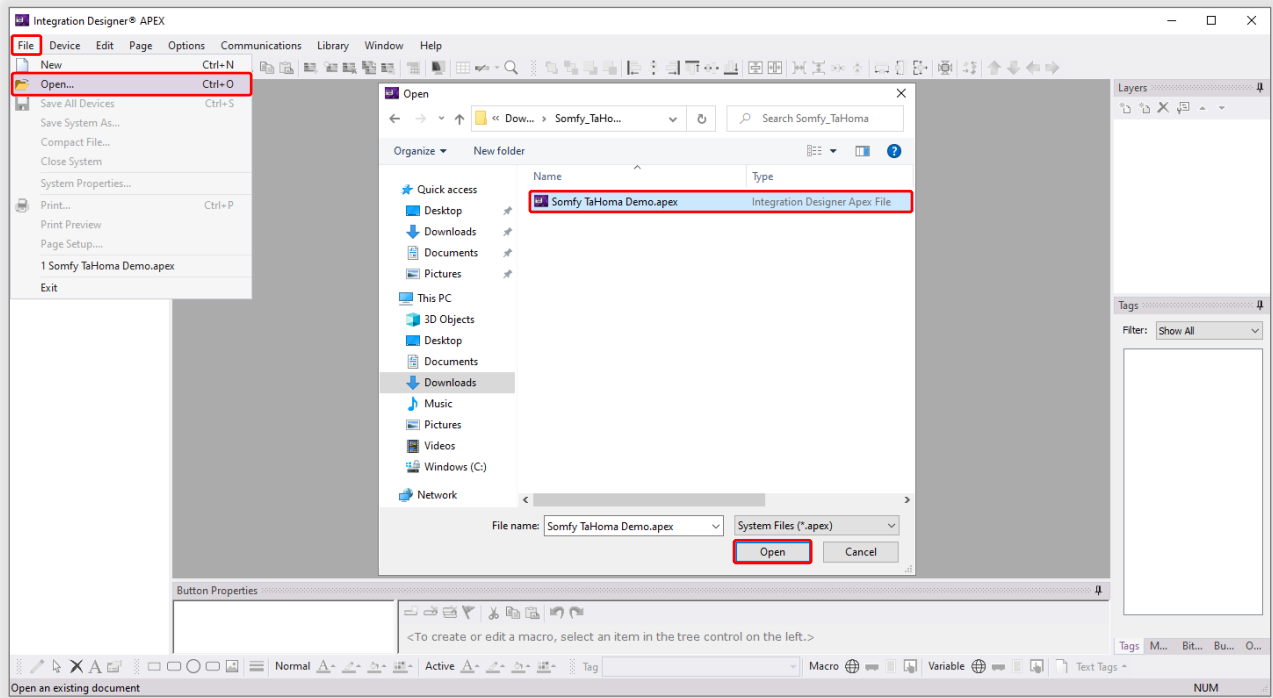


V. SET UP

OPEN DEMO FILE

The Somfy TaHoma Demo file is located in the Somfy TaHoma driver package available in the RTI Dealer Portal.
The Demo file is an Integration Designer APEX template with a sample Virtual Panel.

- 1) In the APEX Menu Bar, SELECT "File"
- 2) SELECT "Open"
- 3) BROWSE to the "Somfy TaHoma Demo.apex" file, SELECT the file
- 4) SELECT "Open"



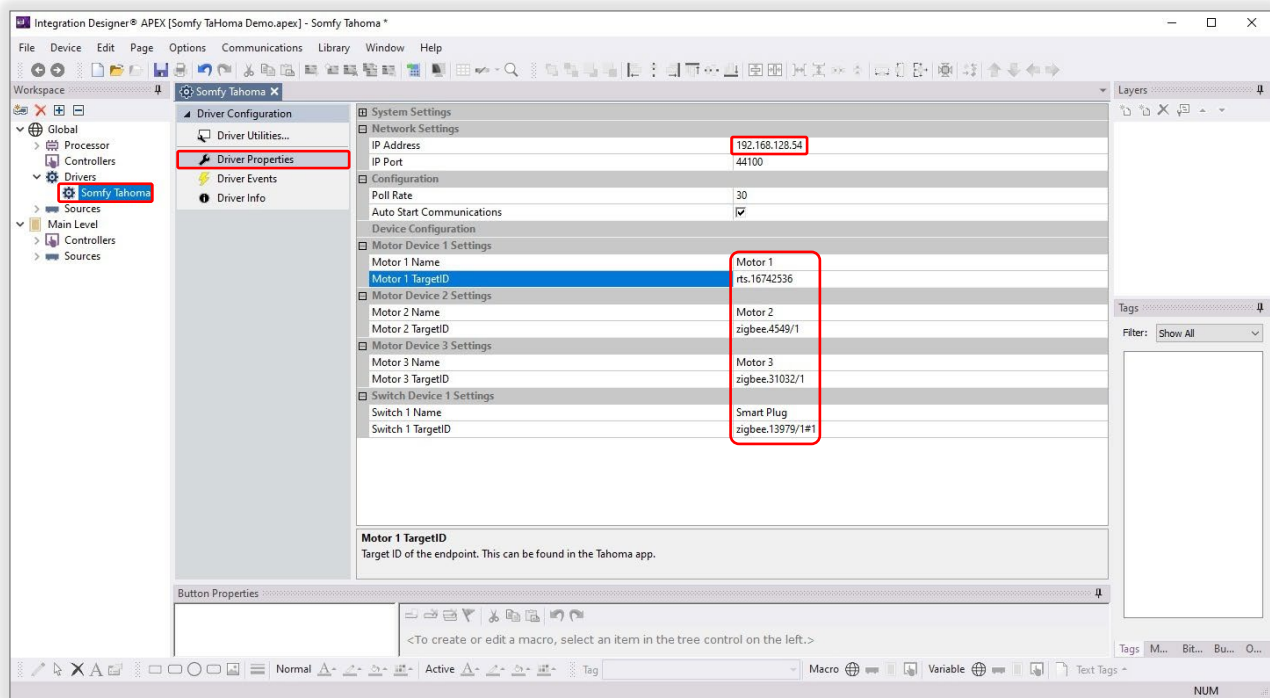
The Somfy TaHoma Demo may require generating a new Network and System Encryption Key before use.
[See Appendix B](#) to generate a new Network or System Encryption Key.

DRIVER CONFIGURATION

Reference the Integration Report for the TaHoma Interface IP address and device addresses.

- 1) In the APEX Workspace tray, EXPAND "Drivers," SELECT "Somfy Tahoma"
- 2) In the Somfy Tahoma Driver Configuration, SELECT "Driver Properties"
- 3) In the Network Settings, ENTER the IP Address of the TaHoma Interface in the "IP Address" field
- 4) In the Motor Device 1 Settings, ENTER a Motor Address in the "Motor 1 TargetID" field
- 5) In the Motor Device 2 Settings, ENTER a second Motor Address in the "Motor 2 TargetID" field
- 6) In the Motor Device 3 Settings, ENTER a third Motor Address in the "Motor 3 TargetID" field
- 7) In the Switch Device 1 Settings, ENTER a Smart Plug Address in the "Switch 1 TargetID" field

Device names are automatically polled once communications are established with the TaHoma Interface.
It is not necessary to enter individual motor or smart plug names.

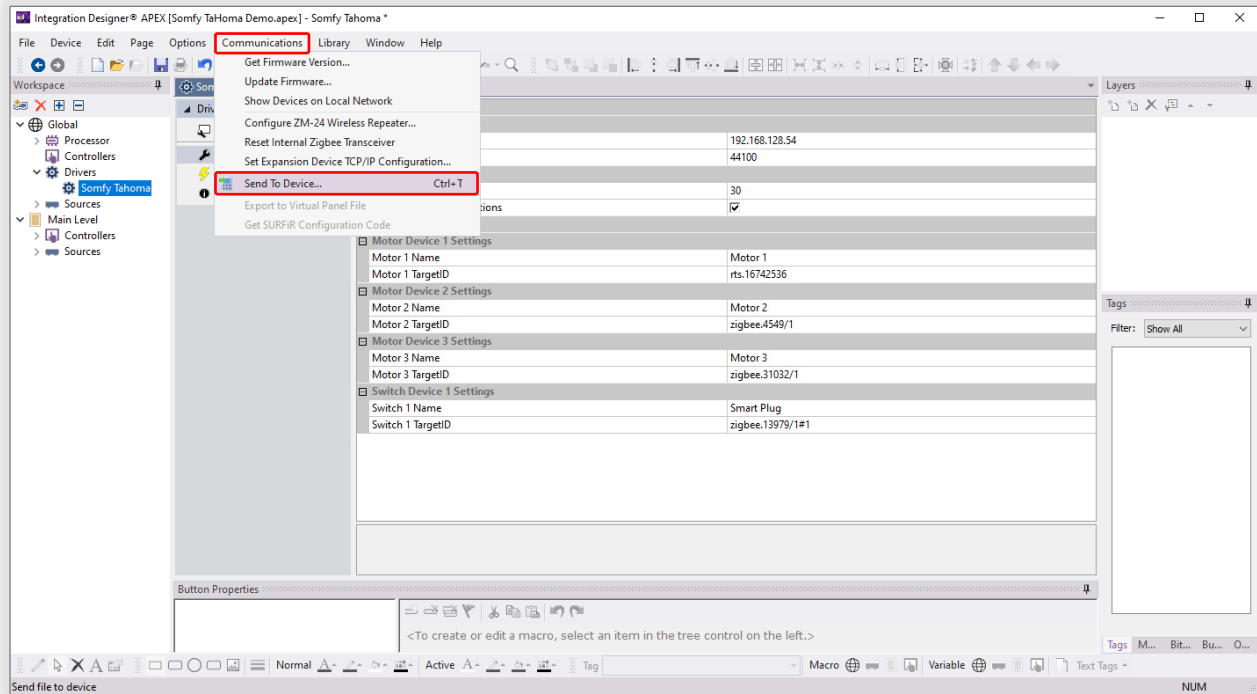


Reference the Somfy TaHoma North America Gateway Driver details in the Driver Info section.

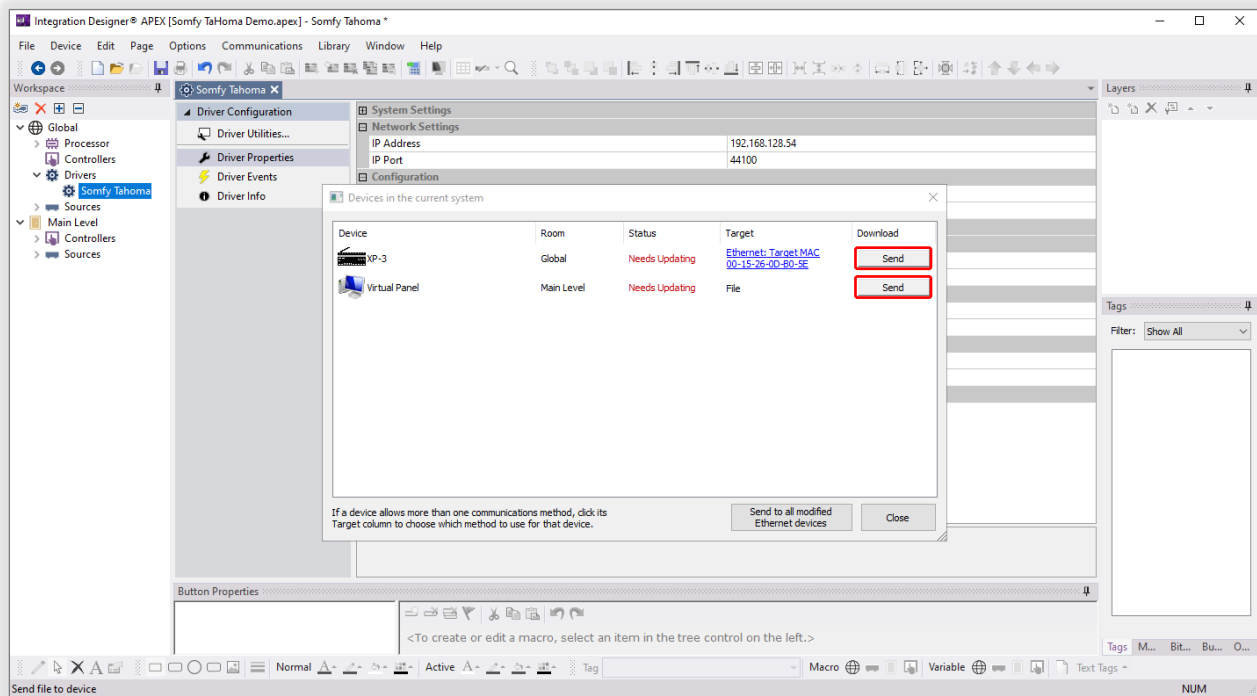
SEND TO DEVICE

Send To Device is a process of uploading the system file from Integration Designer to the connected devices on the system. Run this process to provide the update status of each device. Perform this process after any programming modifications.

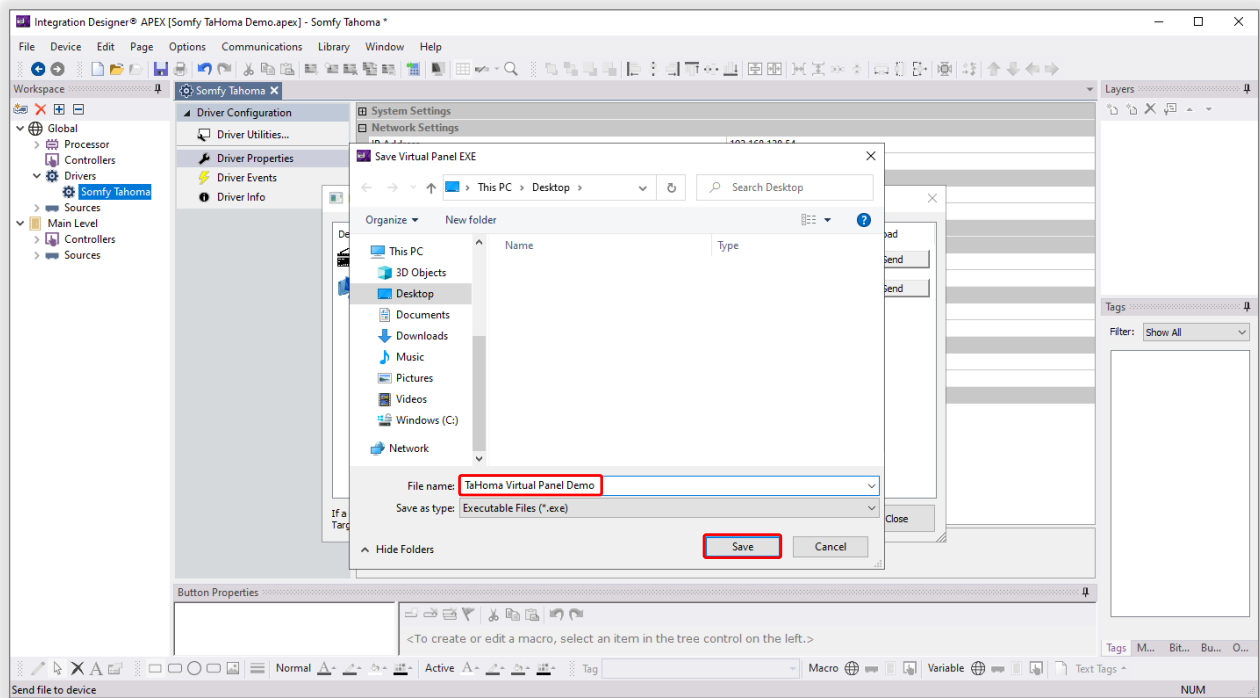
- 1) In the APEX Menu Bar, SELECT "Communications"
- 2) SELECT "Send To Device..." to display the devices in the current system



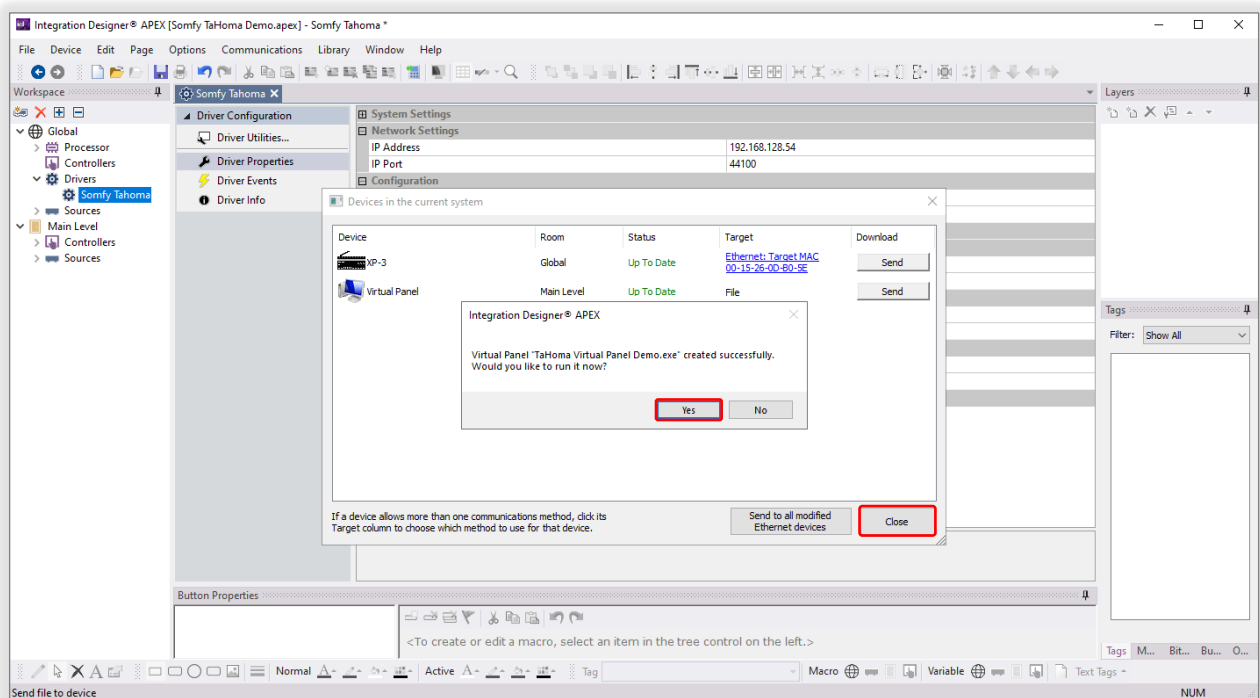
- 3) SELECT the RTI Processor and communications method in the Target column
- 4) SELECT "Send" in the Download column of the RTI Processor row
- 5) SELECT "Send" in the Download column of the Virtual Panel row



- 6) NAVIGATE to the desired location to save the file, NAME the Virtual Panel executable file in the "File name" field
- 7) SELECT "Save"



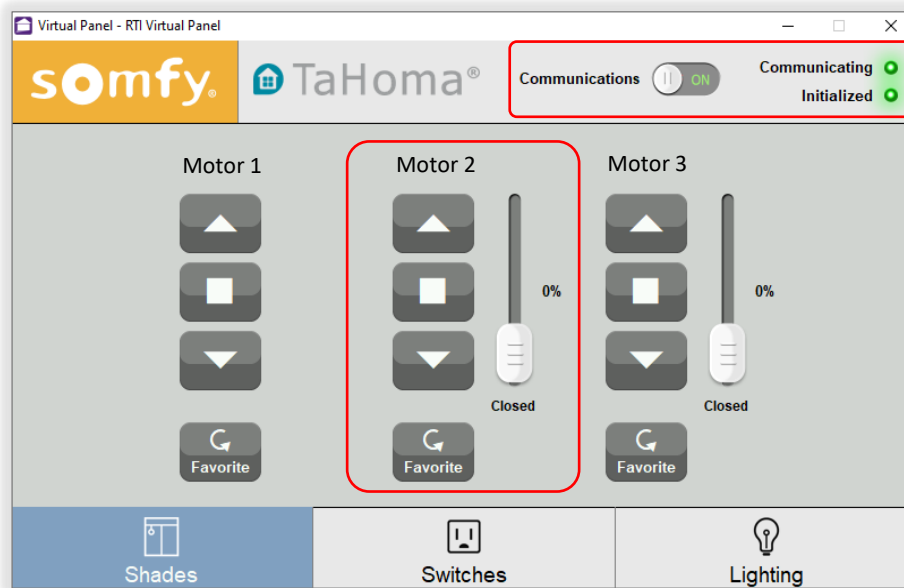
- 8) SELECT "Yes" to run the Virtual Panel or SELECT "No" to run later
- 9) SELECT "Close" when the devices show "Up To Date" in the Status column



RUN VIRTUAL PANEL

[See Appendix C](#) for a list of Somfy TaHoma specific commands and actions. RTS motors do not report positional feedback. RTS motors are capable of one programmable "my" or favorite position that requires a Stop command when the motor is at rest. Use the Virtual Panel "Favorite" button to achieve the "my" position command.

- 1) TOGGLE the Communications switch to the "ON" position
- 2) ENSURE the Communicating and Initialized indicators are **GREEN**
- 3) Use the onscreen controls to TEST device operation:
 - The "Up" button moves the shade to the fully open position
 - The "Stop" button stops the shade when moving
 - The "Down" button moves the shade to the fully closed position
 - The "Favorite" button moves the shade to the programmed "my" position when shade is at rest
 - The "Percent Slider" moves the shade to a percent position closed (not available for RTS motors)



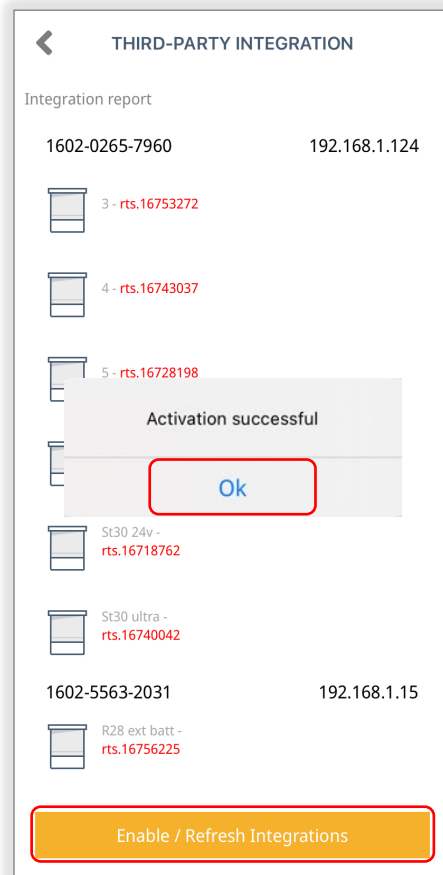
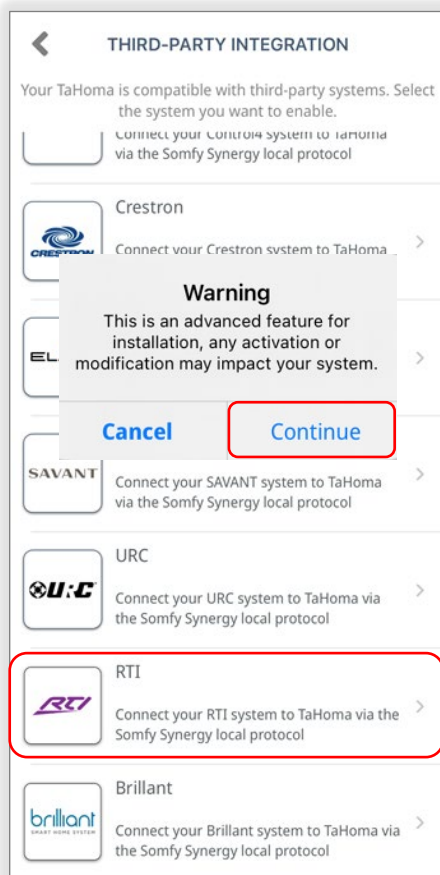
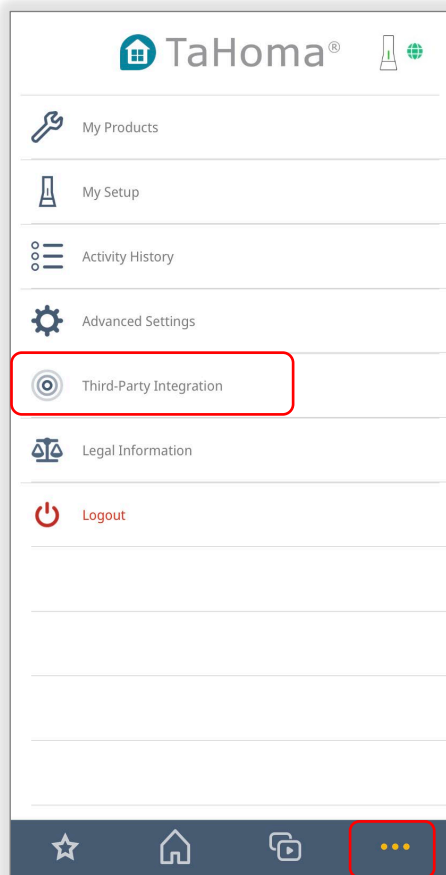
- The "On" button turns power on
- The "Off" button turns power off
- The "Toggle" button sequence controls power on-off



APPENDIX

[APPENDIX A] ENABLE THIRD-PARTY INTEGRATION

- 1) OPEN the TaHoma North America App
- 2) SELECT the "Menu" icon in the bottom bar
- 3) SELECT "Third-Party Integration"
- 4) SELECT "RTI" to view the Integration Report
- 5) SELECT "Continue" at the Warning
- 6) SELECT "Enable/Refresh Integrations"
- 7) SELECT "Ok"



[APPENDIX B] GENERATE NETWORK & SYSTEM KEYS

The Network Key must be unique for every system and is not related to any WEP/WPA/Wi-Fi keys. Changing the system key will prevent all existing virtual panels from connecting and requires a fresh update for each device. See Send to Device to update device connections.

- 1) In the APEX Menu Bar, SELECT "File"
- 2) SELECT "System Properties"
- 3) In the Zone tab, Network Key section, SELECT "Generate"
- 4) In the RTiPanel / Virtual Panel tab, Security section, SELECT "Generate new system encryption key"
- 5) SELECT "Yes" to regenerate the system keys
- 6) SELECT "OK"

The screenshot shows the 'System Properties' dialog box with the 'Zone' tab selected. The 'Client Information' section shows 'RTiPanel / Virtual Panel'. The 'System Zone Code' section has a dropdown set to '1'. The 'Network Key' section shows a key 'QGGrD%Sqkt3@tGfLwWW5eTbX' and a 'Generate' button. A warning icon and text state: 'This key must be unique for every system, and is not related to any WEP/WPA/WiFi keys. You should use the default value in most cases.' At the bottom are 'OK' and 'Cancel' buttons.

The screenshot shows the 'System Properties' dialog box with the 'RTiPanel / Virtual Panel' tab selected. The 'Remote Access' section shows 'External Gateway' as 'XP-3', 'External IP/Hostname' as an empty field, and 'Port' as '4110' with a 'Default' checkbox checked. The 'Security' section has a 'Generate new system encryption key' button. Below it, a warning icon and text ask: 'Do you want to regenerate the system keys? Changing the system key will prevent all existing virtual panels from connecting. You will have to re-generate every virtual panel after doing this.' There are 'Yes' and 'No' buttons. At the bottom are 'Add', 'Remove', 'Details', 'OK', and 'Cancel' buttons.



TAHOMA ZIGBEE COMMANDS	
Down	Moves blind to the fully closed position
Up	Moves blind to the fully open position
Stop	Stops blind when moving
My	Moves blind to the programmed “my” position if blind is at rest
Position	Moves blind to a percent position closed (0-100)



TAHOMA SMART PLUG COMMANDS	
On	Turns power on to lighting or small appliance
Off	Turns power off to lighting or small appliance
Toggle	Sequence controls lighting or small appliance on-off



TAHOMA RTS COMMANDS	
Down	Moves blind to the fully closed position
Up	Moves blind to the fully open position
Stop	Stops blind when moving
My	Moves blind to the programmed “my” position if blind is at rest
Tilt Up	Tilts blind up (only available for tilt blinds)
Tilt Down	Tilts blind down (only available for tilt blinds)

ABOUT SOMFY

SOMFY® has been improving everyday life for more than 270 million people by designing and manufacturing intelligent motorization solutions for interior window coverings and exterior solar protections. Somfy innovates to automate and connect shades, blinds, draperies, awnings, rolling shutters, exterior screens & pergolas for commercial and residential buildings in 58 countries across the globe. With 170+ million motors produced over the last half century, Somfy is committed to creating reliable and sustainable solutions that promote the best way of living and well-being for all.

FOR QUESTIONS OR ASSISTANCE PLEASE CONTACT TECHNICAL SUPPORT:

(800) 22-SOMFY (76639)

technicalsupport_us@somfy.com

SOMFY SYSTEMS INC

SOMFY NORTH AMERICAN HEADQUARTERS

121 Herrod Blvd.

Dayton, NJ 08810

P: (609) 395-1300

F: (609) 395-1776

FLORIDA

1200 SW 35th Ave.

Boynton Beach, FL 33426

F: (561) 995-7502

CALIFORNIA

15301 Barranca Parkway

Irvine, CA 92618-2201

F: (949) 727-3775

SOMFY ULC

SOMFY Canada Division

6411 Edwards Blvd

Mississauga, ON L5T 2P7

P: (905) 564-6446

F: (905) 238-1491

www.somfypro.com

A BRAND OF **SOMFY** GROUP

