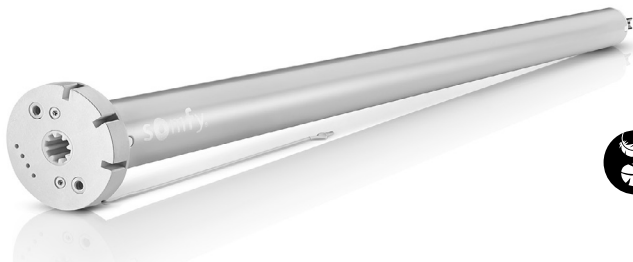


# Sonesse® ULTRA 30 WireFree Zigbee (Li-ion)



The **Sonesse® ULTRA 30 WireFree Zigbee (Li-ion)** increases motorized shading opportunities with Somfy's 2Nm ultra-strong wirefree motor for interior shades. Its ultra-quiet and ultra-reliable performance also features a built-in, rechargeable lithium-ion battery to eliminate wiring and provide convenience to installers and end users.

## Compatible end-products



Roller shades



Roman shades



Woven woods



Pleated shades\*



Cellular shades\*



Layered/  
Zebra shades



Sheer horizontals

\*Using CTS40

## Main functionalities



2 Nm torque for larger size shades



Designed for silence



Position feedback



Openness of the Zigbee protocol



Built-in rechargeable Li-ion battery



LED provides feedback on motor



Battery level feedback



Soft start and Soft stop



Adjustable speed



"my" function



Solar charging options



Quick & easy settings



Built-in speed control

## Benefits for professionals

### Convenience

- Compatible with a wide range of interior window coverings

### Easy installation

- No wiring or external batteries

### Easy programming and adjustment with Set & Go® Connect



- Installation and programming done directly from the app: intuitive step-by-step programming instructions
- Integrated button on the motor head allows for leaving the network and full reset

### Reliability and services

- Safe protocol
- Premium, quality battery that can be replaced
- Somfy quality & warranty

### Open protocol

- Native compatibility with Zigbee® controllers (including Samsung Smartthings)

## Benefits for end users

### Daily comfort

- Quiet operation
- Precision motion with soft start & soft stop
- Manage natural light and privacy via timed schedules and scenes

### Aesthetic integration

- No exposed wiring, uses built-in, rechargeable lithium-ion technology

### Easy to use and maintain

- Easily control shades with TaHoma®
- Get real time feedback on shade positioning and battery-level status via a smartphone or tablet
- Only recharge once a year
- Minimize maintenance with solar charging option

### Go hands free with voice control

- Compatible with voice control assistant (with TaHoma and Alexa or Google Home)

### Safety and reliability

- No hanging cords, provides a child-safe and pet-friendly solution
- Somfy quality and warranty



TaHoma® app

Whether home or away, easily control window coverings and receive real-time feedback on shade positioning and battery level status via a smartphone or tablet.



Android

iOS

TaHoma North American App

# Sonesse® ULTRA 30 WireFree Zigbee (Li-ion)

Item #: 1241752

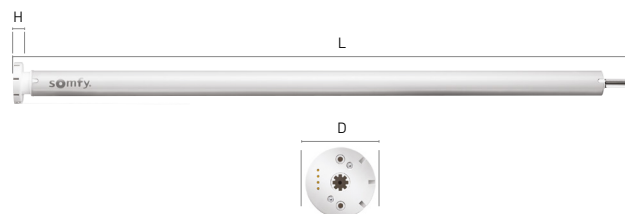


## Technical data

Voltage Supply	12V DC
Index Protecting rating	IP 20 (for indoor use only)
Limit Switch type	Electronic
Temperature working range	32°F to 140°F (0°C to 60°C)
Temperature charging range	32°F to 104°F (0°C to 40°C)
Temperature storage range	-4°F to 140°F (-20°C to 60°C)
Insulation class	Class III
Antenna	15 cm wire length, must not be cut or lengthened. For greatest RF range, must be exposed and should not come in contact with metal surfaces. RF wire may need to be repositioned for optimal performance.

## Dimensions

Motor length (L)	25.6 in. (650mm)
Head thickness (H)	.36 in. (9mm)
Head diameter Ø (D)	1.73 in. (44mm)
Tube min Ø (int)	1.13 in. (28.8mm)



## Performances

Nominal torque	2 Nm
Nominal Speed	20 rpm
Adjustable speed	10-28 by increment of 2 rpm
Sound Level	< 42 dB(A)*
Radio Protocol	Zigbee 3.0 / Bluetooth 4.2
Radio Frequency	2.4 GHz
Battery type	12V 2600 mAh (built-in Lithium-ion)
Battery autonomy	Only recharge once per year**
Recharging time	< 4-5 hours
Low Battery Indicator	LED

\*Power level at nominal torque and speed.

\*\*Based on average shade size and one cycle per day.

## Certifications



© Somfy Systems, Inc. 12/2021  
Zigbee® is a registered trademark of Zigbee Alliance.  
All brands, products and trademarks are the property of their respective owners.

somfy®